



# **COVID-19 in TURKEY**

**Ministry of Health and Scientific Committee  
Republic of Turkey**



**A. Turkey's Health Infrastructure**

**B. Current Situation of Covid 19 Pandemic in Turkey**

**C. Health Measures for Tourism in Turkey**

# A. Turkey's Health Infrastructure



- Population per family physician : 3,130
- Total number of beds : 240,197
- Total number of healthcare personnel: 1,119,886
- Emergency healthcare services
  - a. Population per ambulance: 15,451
  - b. Average ambulance response time: 10 min

# A. Turkey's Health Infrastructure



Free of charge for all Turkish citizens and foreigners till the end of emergency situation.



# A. Turkey's Health Infrastructure



## Hospital Care Services

### Number of Hospitals and Beds

	Hospital	Bed	ICU Bed
Total	1.538	240.197	45.349

### Medical Technology at Facilities

	Total
MR	902
CT	1.213
Ventilator	32.427

### Bed Occupancy Rates

Bed occupancy rate (%)		ICU bed occupancy rate (%)	
10.04.2021	10.07.2021	10.04.2021	10.07.2021
52.6	42	70.4	61.5

# A. Turkey's Health Infrastructure



## Hospital Care Services



### **Quality Bed**

Private, single and double rooms at hospitals



### Coronavirus Scientific Committee

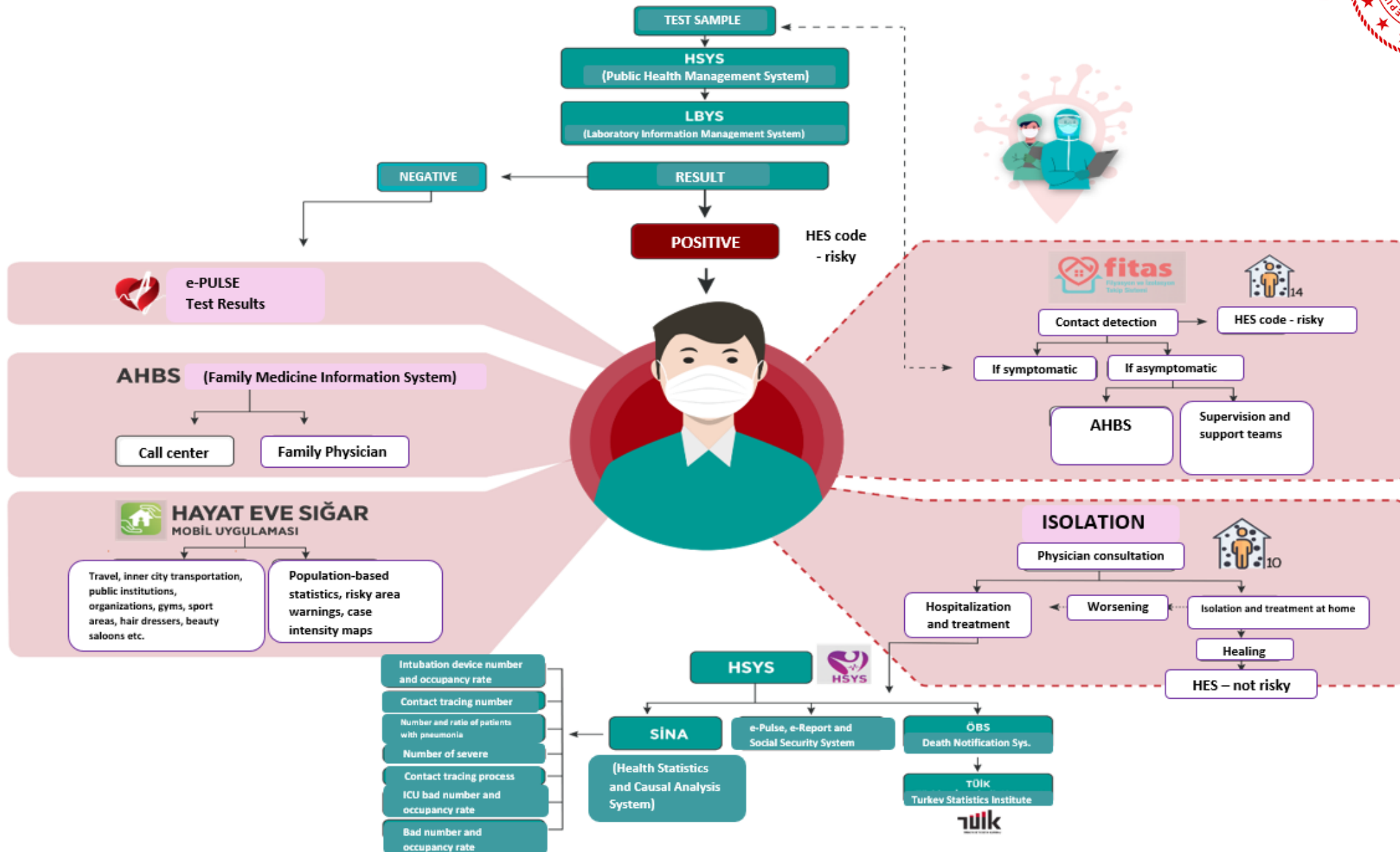
- Intensive Care Scientific Advisory Board
- Scientific Advisory Board on Pandemic Management
- Scientific Advisory Board on Nosocomial Infections

#### Sub Working Groups

- Pandemic Management in Community
- Infection Control and Personnel Health at Hospitals
- Laboratory and Radiological Diagnosis
- Patient Triage
- Treatment Management
- Treatment Management at ICU
- Planning of Hospital and Intensive Care Units
- Measures to be implemented by Public Institutions
- Design and Updating of Digital/Communication Materials



# B. Current Situation of Covid 19 Pandemic in Turkey

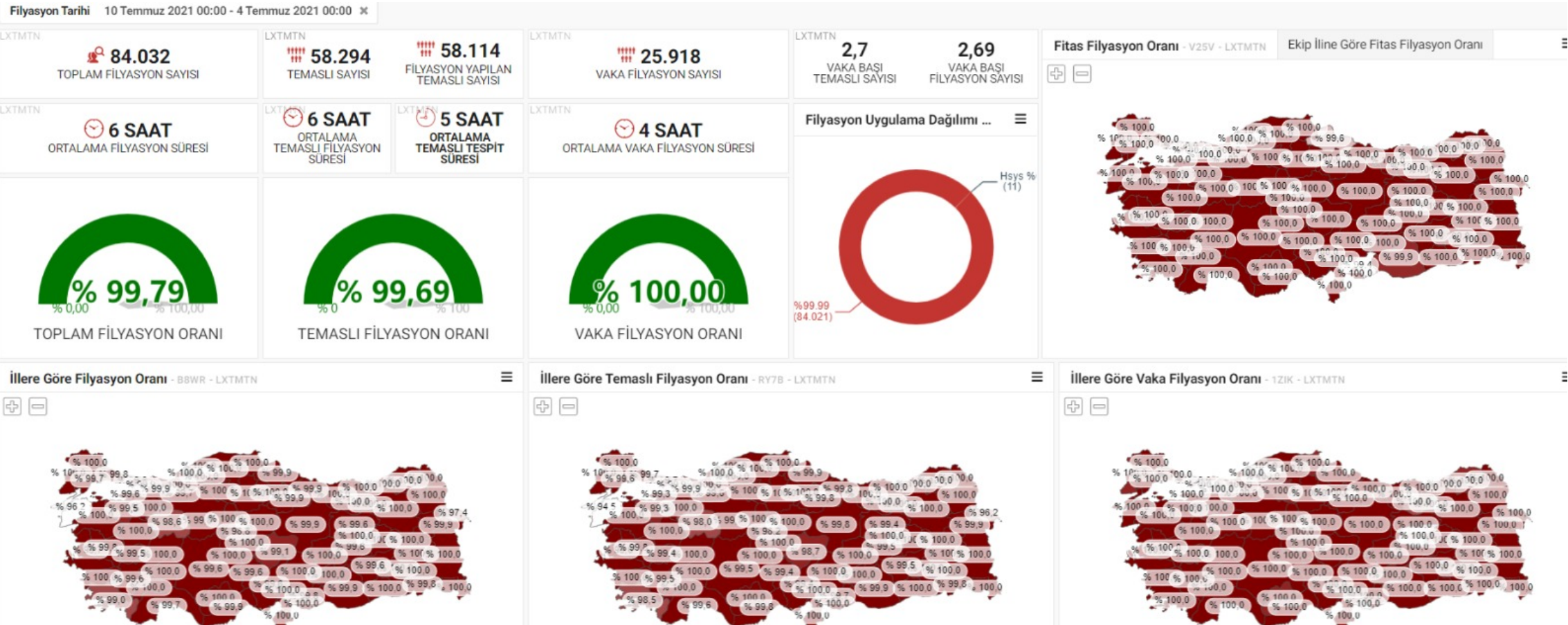




# B. Response to the COVID-19 Pandemic



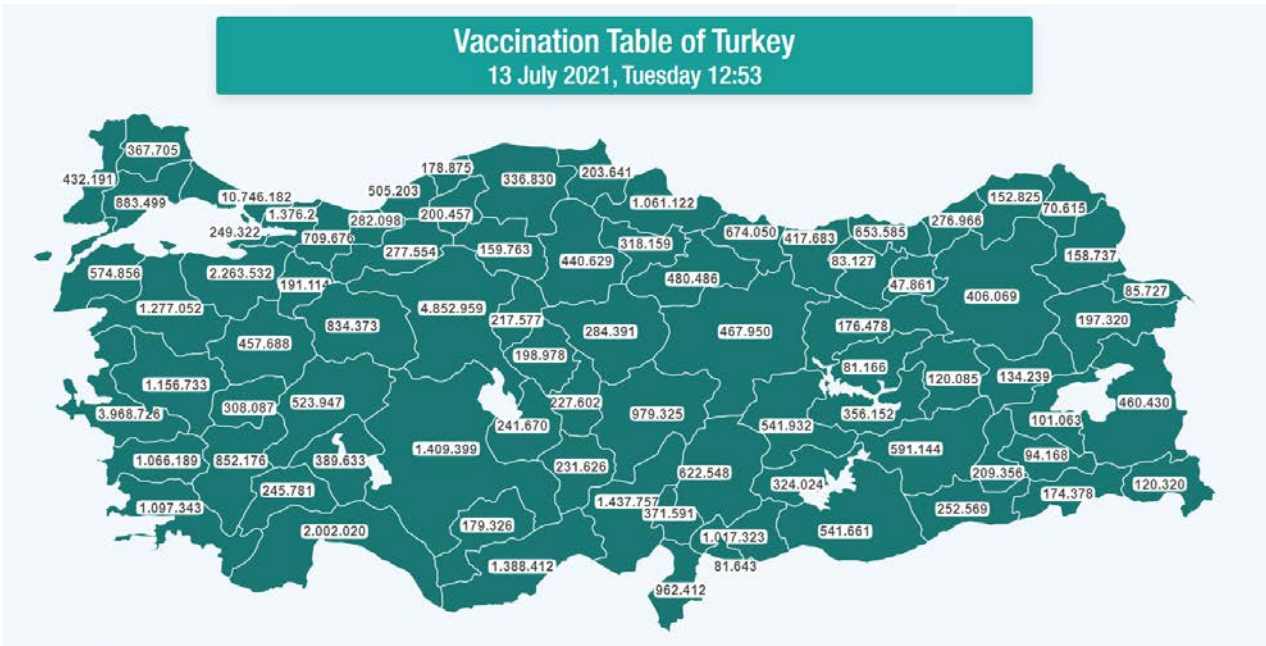
## Contact Tracing (4 – 10 July 2021)



# B. Current Situation of Covid 19 Pandemic in Turkey



## Vaccination Efforts

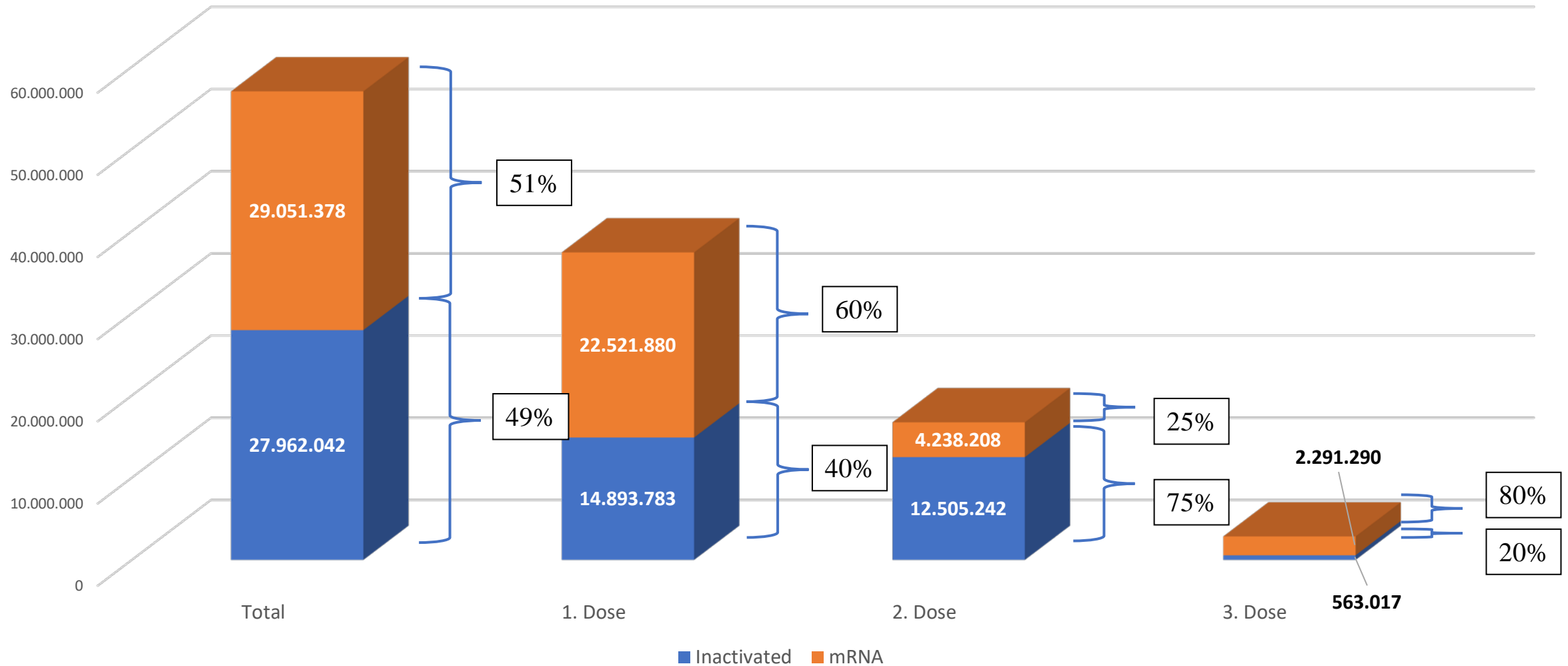


Total Number of Vaccines Applied	Number of People Who Received 1st Dose	Number of People Who Received 2nd Dose
<b>59.095.105</b>	<b>38.092.490</b>	<b>17.811.920</b>

# B. Current Situation of Covid 19 Pandemic in Turkey



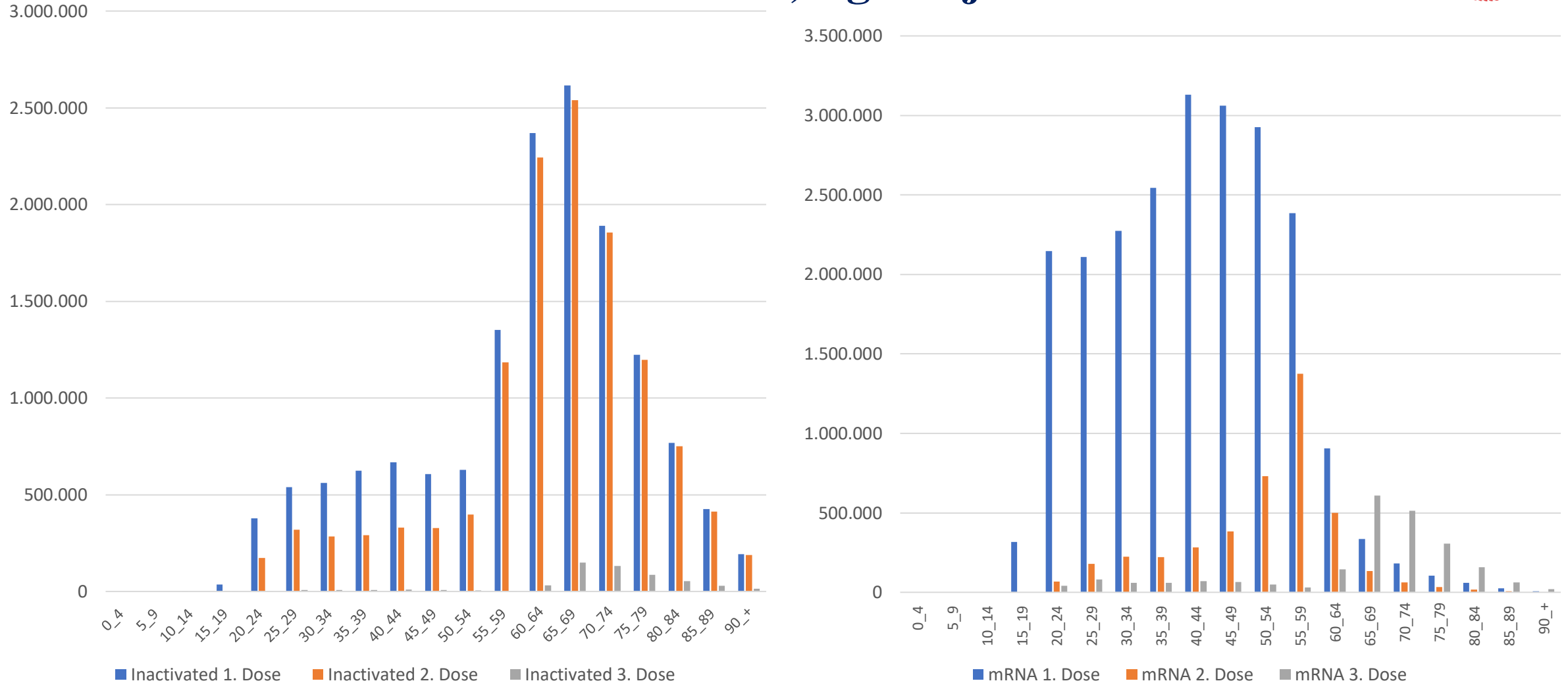
## Number and Ratio of Vaccines Administered



# B. Current Situation of Covid 19 Pandemic in Turkey



## Number of the Vaccines Administred, Age Adjusted







# B. Current Situation of Covid 19 Pandemic in Turkey



## Percentage of the Vaccinated People above 18 on Provincial Basis and Daily Data on Covid 19

GÜNLÜK COVID-19 TABLOSU

12 Temmuz 2021, Pazartesi 19:00

EN AZ BİR DOZ AŞI OLMUŞ  
18 YAŞ ÜSTÜ NÜFUS (%)

1.DOZ TÜRKİYE ORTALAMASI

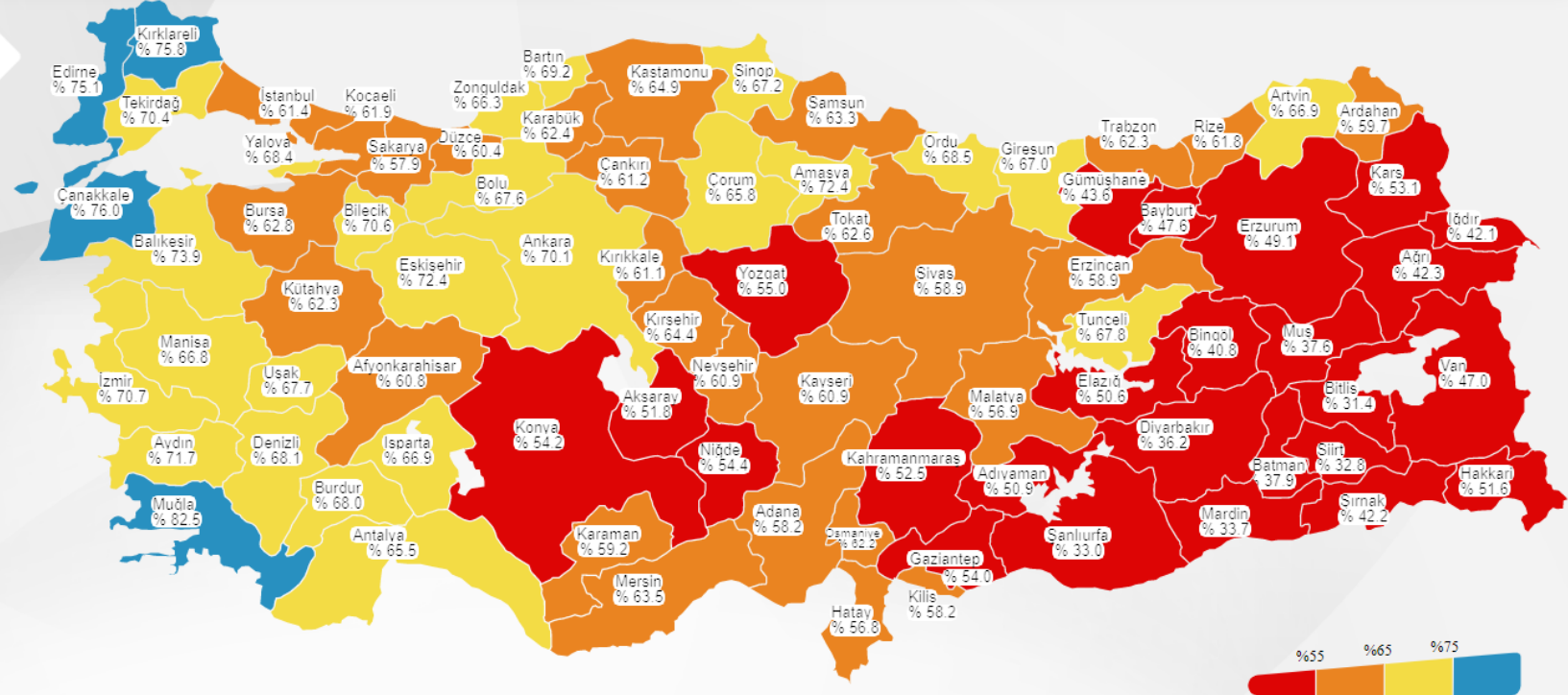
% 61.16

2.DOZ ORTALAMASI: % 28.26

1.,2. VE 3. DOZ TOPLAMI

58.594.137

1.DOZ UYGULANAN	37.960.880
2.DOZ UYGULANAN	17.543.398
3.DOZ UYGULANAN	3.089.859



[1] MUĞLA , [2] ÇANAKKALE , [3] KIRKLARELİ , [4] EDİRNE , [5] BALIKESİR , [6] AMASYA , [7] ESKİŞEHİR , [8] AYDIN , [9] İZMİR , [10] BİLECİK

[10] ŞIRNAK , [9] İĞDIR , [8] BİNGÖL , [7] BATMAN , [6] MUŞ , [5] DİYARBAKIR , [4] MARDİN , [3] ŞANLIURFA , [2] SİİRT , [1] BİTLİS

TEST  
SAYISI

227.273

VAKA  
SAYISI

5.404

VEFAT  
SAYISI

49

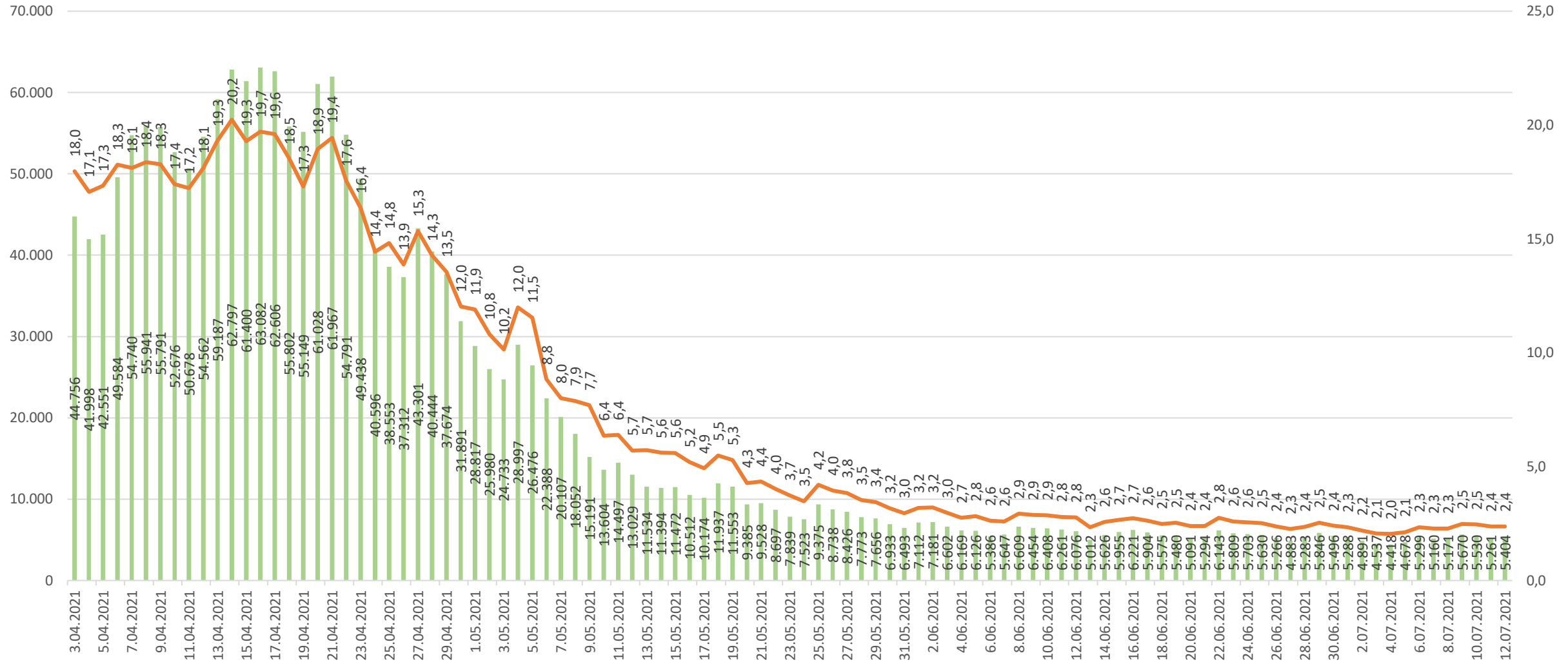
İYİLEŞEN  
SAYISI

5.506

# B. Current Situation of Covid 19 Pandemic in Turkey



## Number of Cases and Test Positivity (%)



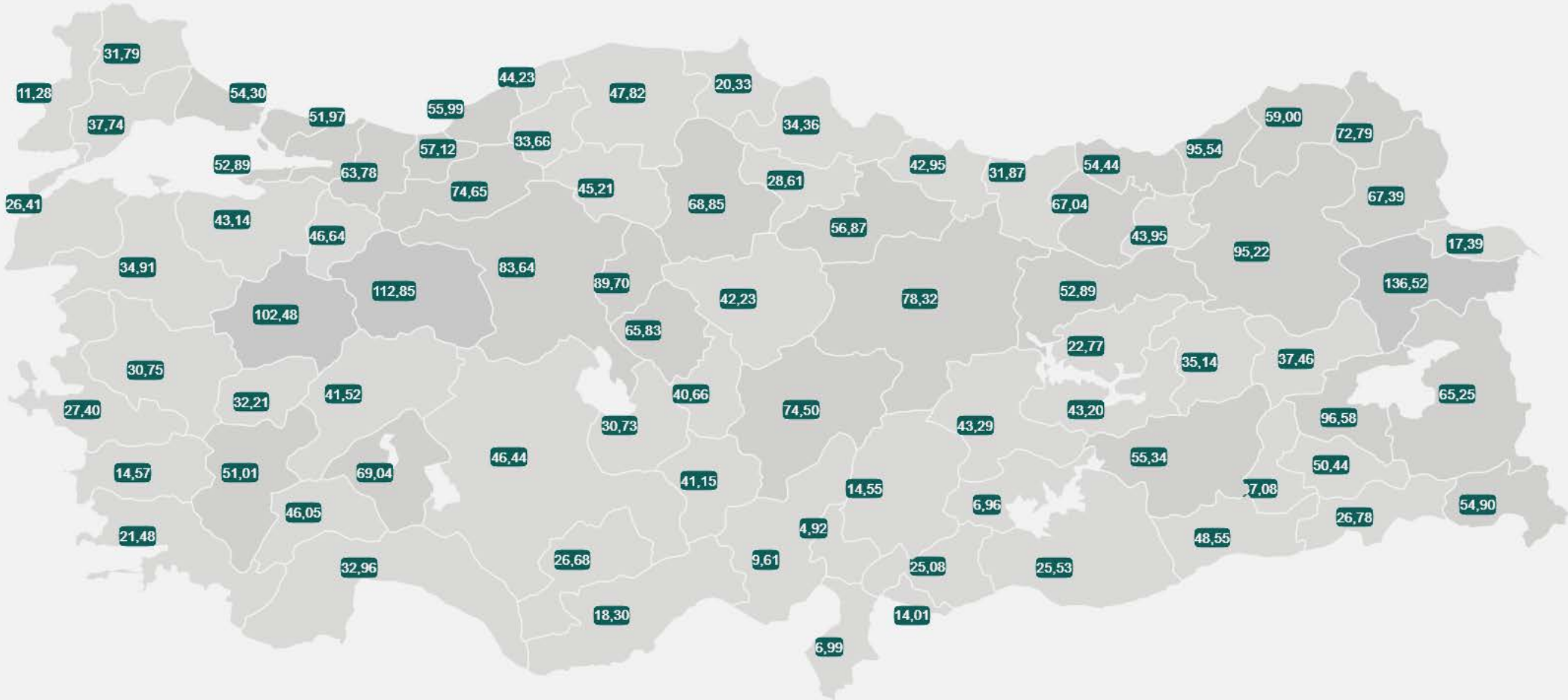


## B. Current Situation of Covid 19 Pandemic in Turkey



### Case Incidence per 100,000 Population across Turkey

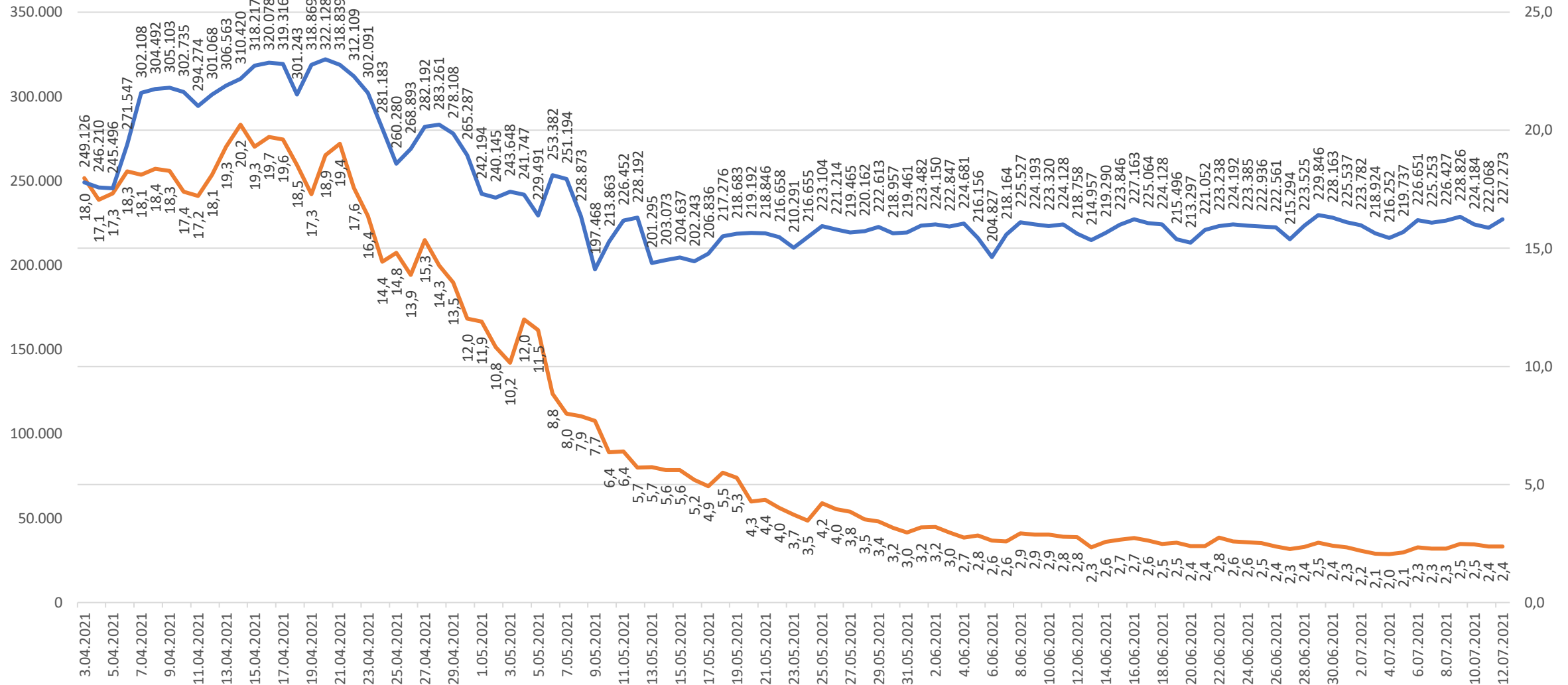
İllere Göre Haftalık Vaka Sayısı (100 binde)  
19- 25 Haziran 2021



# B. Current Situation of Covid 19 Pandemic in Turkey



## Number of Tests and Test Positivity (%)



## B. Current Situation of Covid 19 Pandemic in Turkey



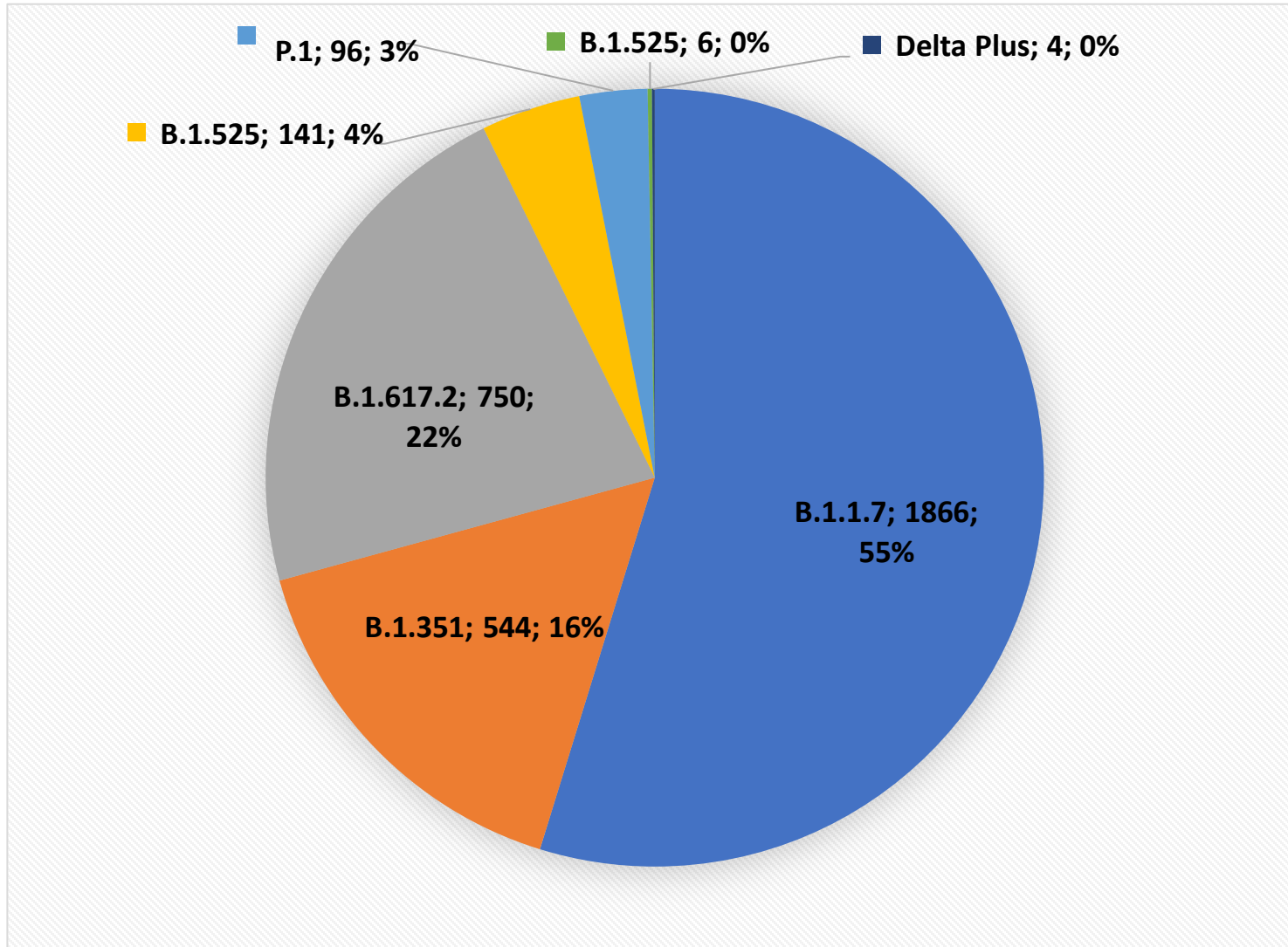
Screening tests are performed for;

- Guardians at prisons
- People to begin their military service
- Factories upon their requests
- People who will go abroad according to the policy of the country of destination
- Healthcare workers upon their requests, regardless of the symptom
- For people without symptoms for a fee

# B. Current Situation of Covid 19 Pandemic in Turkey



## SARS-CoV-2 Variants (%)



## B. Current Situation of Covid 19 Pandemic in Turkey



### Sample Collection

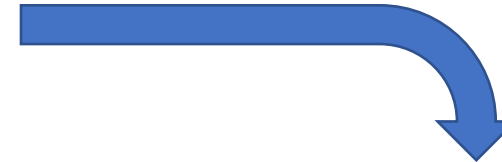


Laboratory  
(SARS COV-2 + UK )  
multiplex RT-PCR  
(The UK variant makes up 95%  
of all samples collected)



Scanning in 16 centers in big cities (İstanbul, Ankara, İzmir, Antalya, Adana, Diyarbakır, Gaziantep, Van, Erzurum, Samsun, Bursa) is performed with **SARS COV-2 + UK + E484K + L452R** multiplex RT-PCR.

Full genome sequence analysis is performed on samples found to be positive.



In provincial laboratories, Full genome sequence analysis is performed in samples with high viral load for

- 5% of the samples that do not have a UK variant
- 5% of the UK variant samples.

- Re-infections,
- positive samples collected from immunocompromised patients,
- post-vaccination positive samples are sent to the National Laboratory of Virology for a full genome sequencing.



# Tourism In Turkey





# C. Health Measures for Tourism in Turkey



## Before Arrival In Turkey

← → ↻ register.health.gov.tr

REPUBLIC OF TURKEY  
MINISTRY OF HEALTH

Search English

### Form for Entry to Turkey

Clarification Text

The form must be filled in within the last 72 hours before travel.

Information on the website should be filled in order to provide you proper information and protect the health of yours and loved ones during the Covid-19 pandemic. A private HES code will be created automatically by the given information. We will be able to contact with you in the case of any contact with Covid-19 patient during your travel and staying thanks to HES Code. For this reason, the accuracy and updateability of the information is quite important.

The form you will fill may be checked at the borders of the Republic of Turkey whether you have filled in this form or not, and if you haven't filled in the form or made misleading statements, you may face legal and administrative sanctions. Furthermore, you might not be allowed to enter Turkey. (if you are not a Turkish Citizen or you do not have a residence permit).

Fill in all form fields to go to the next step.

(\*) Required fields

1 2 3 4

#### General Information

Name (*)	Passport Number (*)	E-mail Address
<input type="text"/>	<input type="text"/>	<input type="text"/>

Gizlilik - Şartlar



# C. Health Measures for Tourism in Turkey



## How to use the HES code?



▶ HES code ensures safety from the point of view of the pandemic during trip to Turkey.

▶ HES code will be checked at various points, especially when entering indoor areas.



▶ HES code provides information about the risk level of the area.

▶ HES code provides quick communication in case of any risky contact.

HES code is related to the personal phone. At any risky contact, the related person is informed immediately via phone.

# C. Health Measures for Tourism in Turkey



## Airports





# C. Health Measures for Tourism in Turkey



## Hotels



**SAFE TOURISM CERTIFICATE**

This certification recommended by Turkey Tourism Promotion and Development Agency is issued by Turkish Standards Institution.

Turkish Standards Institution, is accredited by TURKAK and its accreditation coverage is published at [www.turkak.org.tr](http://www.turkak.org.tr)

has met the requirements of the "Assessment Criteria for COVID-19 and Hygiene Measures to be Implemented in the Hotels and their Food & Beverage Venues during the Pandemic" published within the framework of the "Safe Tourism Certification Program" and has become entitled to receive "Safe Tourism Certificate".

Certificate Number : TSE-TB-72/20      HEAD OF SYSTEM CERTIFICATION GROUP

Issued on : 26/06/2020      M. SUT DÜRU

Date of Expiry : 26/07/2020

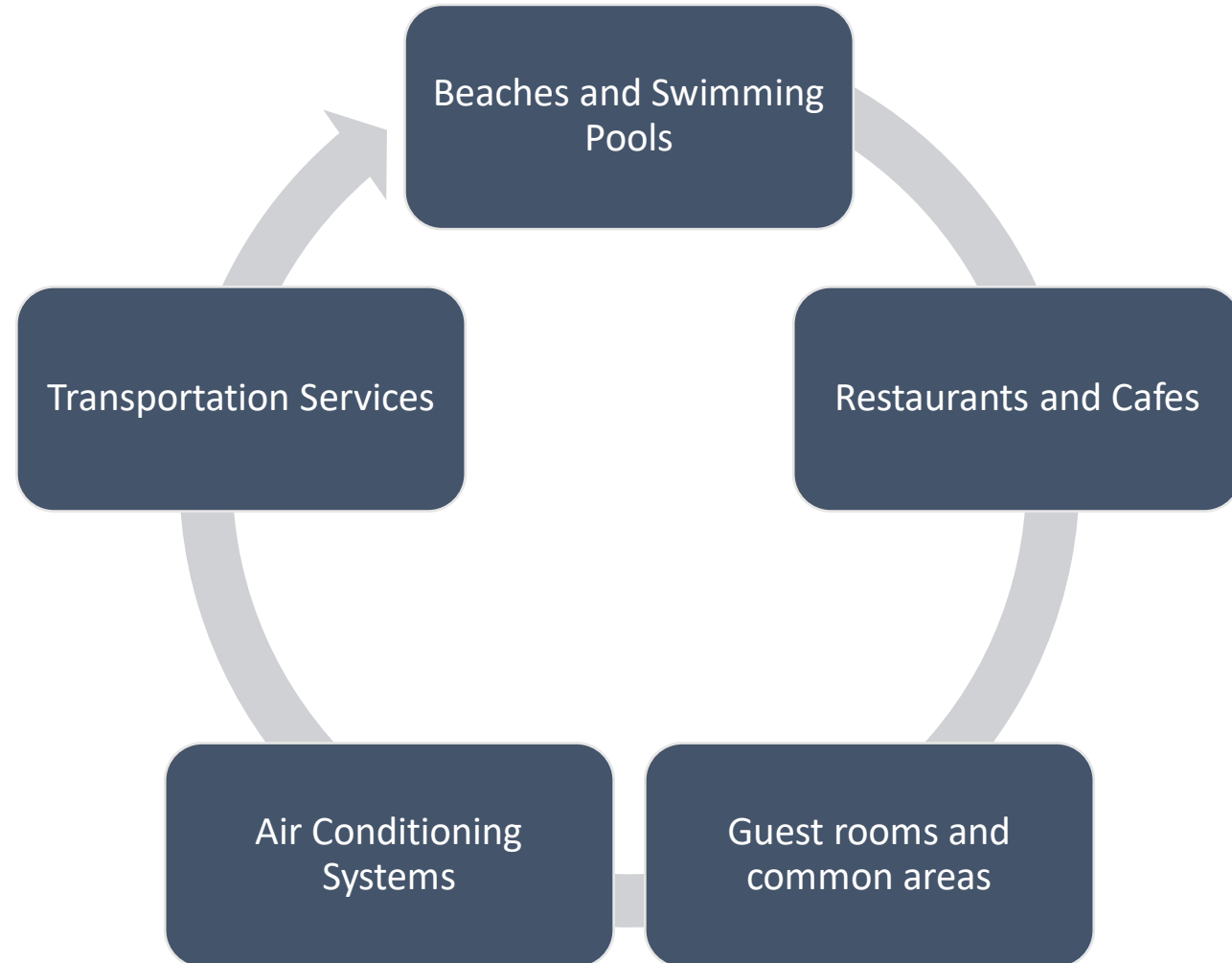
Facility Type: Accommodation Facility

063006202010050001

# C. Health Measures for Tourism in Turkey



## Measures For Tourism



## C. Health Measures for Tourism in Turkey



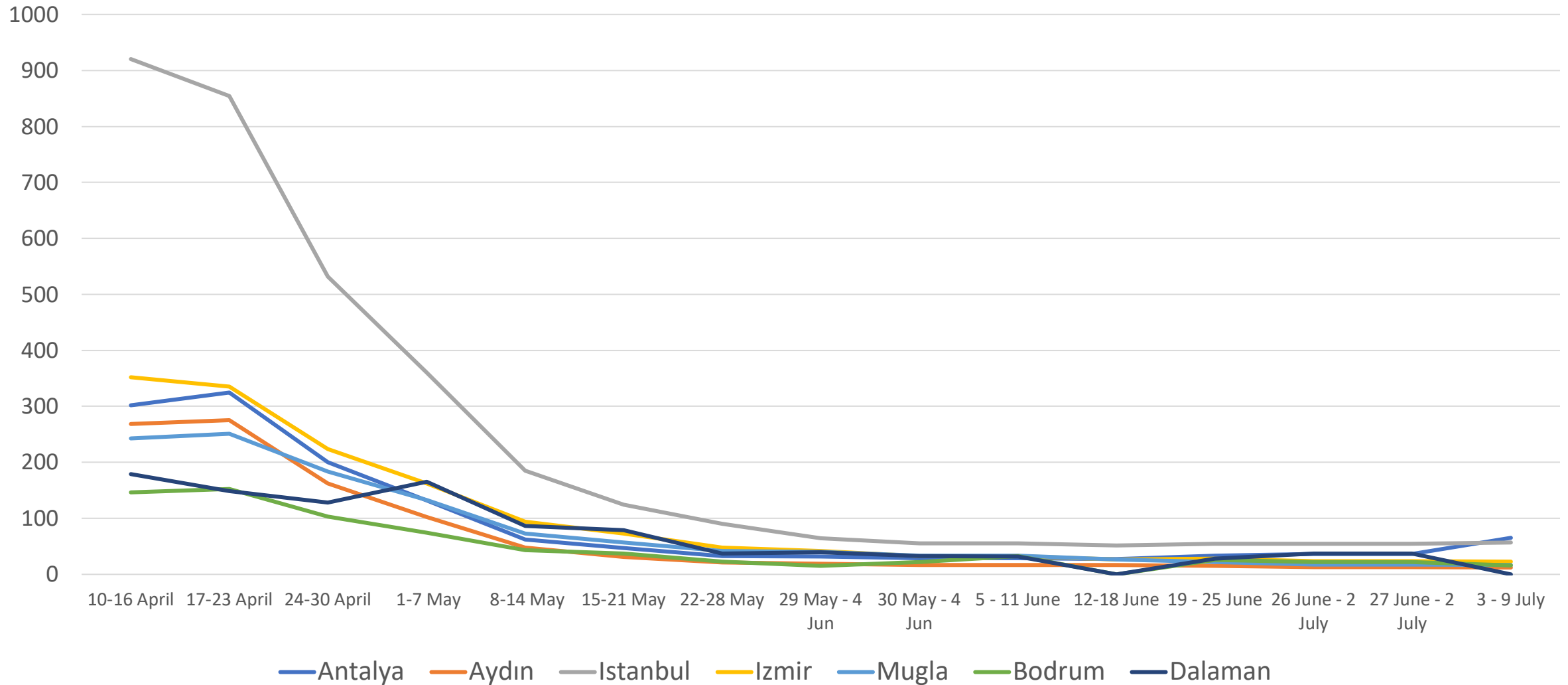
### Case Incidence per 100,000 In Prominent Tourism Destinations

Provinces	10-16 April	17-23 April	24-30 April	1-7 May	8-14 May	15-21 May	22-28 May	29 May - 4 Jun	30 May - 4 Jun	5 - 11 June	12-18 June	19 - 25 June	26 June - 2 July	3 - 9 July
Antalya	301,7	324,6	200,4	131,4	61,7	47,01	32,5	31,9	28,5	28,5	27,1	32,96	35,91	65,0
Aydın	268,1	274,9	162,5	102,2	47,4	31,1	21,1	18,9	16,5	16,5	16,7	14,57	12,78	12,0
Istanbul	920,6	854,8	532	360	184,8	123,9	90	63,9	55,2	55,2	51,3	54,3	54,6	56,8
Izmir	352	335,1	223,3	161,9	93,9	72,8	47,7	41,2	32,0	32	26	27,4	23,51	22,2
Mugla	242,3	250,9	183,5	132,9	72,5	56,3	41,5	39,8	33,4	33,4	26,4	21,48	17,39	16,7
Bodrum	146,5	152	103	73,8	43	36,9	22,6	14,9	22,0	32,5	25,89	25,34	21,48	15,4
Dalaman	178,9	148,7	127,8	165	86	79	37,2	39,5	32,5	31,7	30,21	27,88	37,18	11,6

# C. Health Measures for Tourism in Turkey



## Case Incidence per 100,000 In Prominent Tourism Destinations



## C. Health Measures for Tourism in Turkey



### Healthcare Service Capacity In Prominent Tourism Destinations

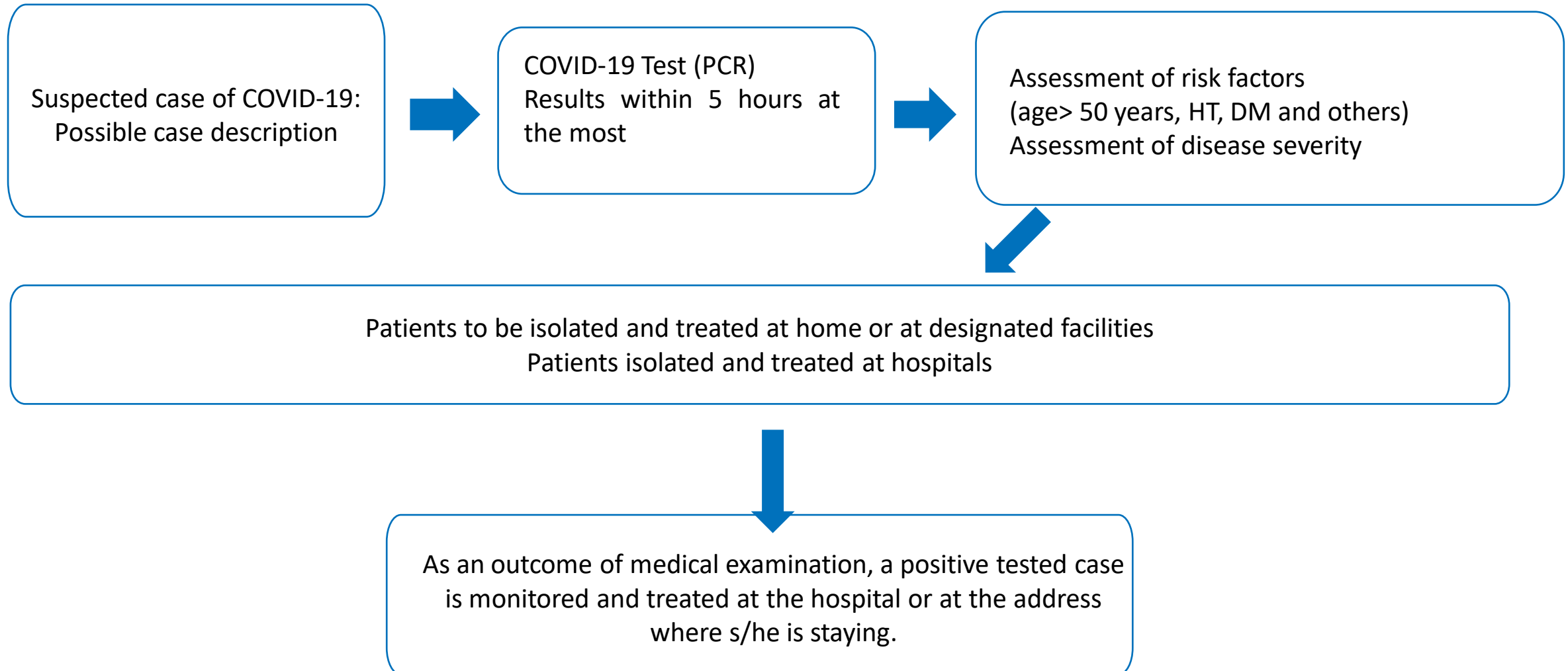
Provinces	Number of Hospitals	Number of Beds	Number of Intensive Care Beds	Bed Occupancy Rate (%)	Intensive Care Bed Occupancy Rate (%)	Number of Ventilators	Number of Physicians	Number of Emergency Ambulances
Antalya	47	7.375	1.348	40,1	58,5	898	5.410	95
Aydın	24	3.267	578	42,6	59,7	329	2.138	72
İstanbul	235	40.250	8.331	50,4	58,1	5.669	34.888	452
İzmir	60	11.716	2.124	54,1	71,5	1.306	11.183	157
Muğla	21	2.244	332	46,1	62,3	229	1.727	89



# C. Health Measures for Tourism in Turkey



## Case Management for Tourists



## C. Health Measures for Tourism in Turkey



### Termination of Isolation of COVID-19 Patients

- **For asymptomatic or mild cases**

By the end of day 14, negative PCR is required at the day 10 for early termination

- **For moderate or severe cases (requiring hospitalization)**

By the end of day 14, negative PCR test result is required at the day 10 for early termination

- **For cases with an indication of intensive care unit**

By the end of day 20, for patients without symptoms at least for 3 days two negative tests at least 24 hours apart are required by the day 10 for early termination

- **For immunocompromised patients**

By the end of day 28, for patients without symptoms at least for 3 days, two negative tests at least 24 hours apart are required by the day 10 for early termination

## C. Health Measures for Tourism in Turkey

---



### Evaluation of Contacts

- All contacts of a COVID-19 case within last 48 hours prior the PCR test or symptom onset, are evaluated.
- If an individual test is positive for COVID-19, contact-tracing teams visit the cases within 4 hours at their hotel after the result has been received in order to identify and collect samples from close contacts.
- Quarantine is 14 days, but if the result of PCR test on day 10 is negative, isolation is terminated.

## C. Health Measures for Tourism in Turkey

---



### Evaluation of VOC (Variant of Concern) Contacts and Patients

- Quarantine for VOC contacts is 14 days, no early termination. Negative PCR test is needed at the end of day 14.
- Isolation for VOC positive patient is 14 days, no early termination

## C. Health Measures for Tourism in Turkey

---



### Tourists' Access to PCR Testing

If PCR test is required upon return to country:

They can get tested:

- Through the hotel's healthcare services or
- PCR test centers at airports





*Thank you.*