

MOMAX

超過二十年研發設計 · 科技創新團隊 | 各大企業訂製商務禮品首選



www.momax.hk info@momax.net 2402 3186
f momaxhk i momax_hk y MOMAX Hong Kong



客戶廣告

CMA

Monthly Bulletin

8月號 August Issue 2020

香港工業再展翅 · 締造輝煌新一頁



CMA 檢定中心

「香港檢測 · 『疫』境『童』行」計劃

CMA Testing "With You · Against Virus" Scheme



香港中華廠商聯合會
The Chinese Manufacturers' Association of Hong Kong



主席：蔡少森 常務會董
委員：吳國安 副會長
李慧芬 常務會董
顏明潤 常務會董
尹德輝 常務會董
胡詠琚 常務會董
孔憲榮 會董

大綱 Index

- P.1-3 CMA 檢定中心「香港檢測·『疫』境『童』行」計劃
CMA Testing "With You · Against Virus" Scheme
- P. 4 2020 年廠商會中學教育基金籌款
CMA Secondary School Education Trust Fundraiser 2020
- P. 6-7 中小企資援組：資助基金推廣全面觀 2020 八月網上見！
SME ReachOut Fund Fair Everywhere 2020
See You Online in August
- P. 7 本會活動速遞
CMA Focus
- P. 8 CMA MAKERS
- P. 10 物流及供應鏈多元技術研發中心 (LSCM)
「居安抗疫」系統
Logistics and Supply Chain MultiTech R&D Centre (LSCM)
StayHomeSafe System
- P. 11 CMA 良倉
CMA e-warehouse
- P.12-13 疫症下的惜食堂
Food Angel amidst the Covid-19 Pandemic
- P. 15 會員工商批發告示專欄
Notice for Members' Business Wholesale
新會員介紹
Introduction of New Members
- P. 16 「T-box 升級轉型計劃」助中小企拓新市場
T-box helps SMEs explore new markets with expert support
- P. 17 在粵港商精讀
廣州市實施粵港澳大灣區個人所得稅優惠財政補貼五十問
CMA Makers Quick Notes of GD Province
50 Q&As on Guangdong Municipality's Implementation of Financial Subsidies Related to Individual Income Tax Preferential Policies in the Guangdong-Hong Kong-Macao Greater Bay Area
- P. 18 廠商會會員尊享優惠
CMA Members' offers



為協助企業及商戶面對疫情帶來的影響以及滿足市民大眾對公共衛生的要求，CMA 檢定中心特別推出嶄新的「室內環境衛生質量 (Indoor Environmental and Hygiene Quality, IEHQ) 標誌服務」，提供現場測試和發出室內環境衛生質量 (IEHQ) 標誌。

有別於市面上其他服務供應商，本中心的 IEHQ 服務旨在為企業提供持續而有效的消毒清潔工作，且透過現場清潔度測試，監測消毒清潔後的數據，以證明消毒清潔工作是否有效。再者，企業可善用 IEHQ 標記對外宣傳其室內環境已作定期合適的消毒清潔工作，而企業的員工和客戶更可掃描 IEHQ 標記上的二維碼以獲取檢測場所的測試結果，大大加強員工及市民大眾信心。此 IEHQ 服務計劃為期 12 個月，本中心團隊會於每季定期測試和檢查，以協助企業之工作環境長期達致滿意的清潔效果。

「香港檢測·『疫』境『童』行」計劃

鑑於學校於五月底陸續分階段復課，並隨著 IEHQ 服務成功應用於不同行業中，本中心進一步推出名為「香港檢測·『疫』境『童』行」的學校室內環境衛生質量檢測支援計劃，免費為香港特別行政區教育局註冊的學校（包括幼稚園、小學及中學）提供環境衛生質量及新冠病毒環境篩查檢測，以提供健康安全的學校環境。

經過接近一個月的推廣，在全港已於教育局註冊的學校當中，大約有接近四分一的學校已率先報名參加此項支援計劃。部份已檢測的學校也得到卓越級別，而針對通過檢測的學校，我們也因應其消毒措施作出針對性改善建議。部份學校更繼續參與我們的 IEHQ 一年期計劃。未來我們會因應疫情對計劃作出調整，希望能繼續為廣大莘莘學子於未來開學時能提供有效的準備。

新發展路向

面對現今市場瞬息萬變加上「再工業化」浪潮，本中心除提供多元化檢測服務，還協助企業升級轉型，配合未來發展方向，當中包括環保、基因科技 (DNA)、物聯網 + (IoT+)、人工智能 AI+、智慧城市及新能源等，為本港工業創造商機。

隨著生活水平的提高，人們變得更加注重個人健康。檢定中心成立子公司 CaTAGene 提供人體基因測試服務，希望透過科學化檢測方法，為社會大眾提供精準的基因型分析報告，更期望透過新建立的平台，聯繫保健食品供應商和目標客戶，共同塑造更合適的個人化保健方案。

創新和科技是推動「再工業化」的重要元素，因此本中心與科技大學及初創公司 Sundial 合作，創立一個研發及配對平台，將廠家配對創新技術，從而協助本地企業改善其生產流程，並達致升級轉型及使科研商品化，讓企業保持自身的競爭力，並且於同行中突圍而出。

另外，基於現今內外環境挑戰對企業轉型升級帶來一定難度，故本中心更首次參與綠色債券服務，以行動支持業界可持續發展，達致互利共贏的目標。

踏入為香港服務的第四十個年頭，本中心更以香港為中心，進一步提供專業服務惠及大灣區。本中心將繼續以充滿熱誠，以人為本，勇於探索的精神，並對事物的好奇心，為社會提供更貼心的服務。

以提昇生活質素為目標，本中心竭誠為人們的生活提供一個更安全更健康及更美好的環境。





Aimed to support the enterprises against the impact of the epidemic as well as to meet the increasing market needs of public hygiene, CMA Testing specially launched the "One-stop Indoor Environmental Hygiene Quality (IEHQ) Mark Service for Indoor Environment" which provides on-site sampling and IEHQ mark issuance.

Different from other service providers on the market, our IEHQ service aims to provide enterprises with continuous and effective disinfection and cleaning work. Through on-site cleanliness testing, the data after disinfection and cleaning are monitored to prove whether the disinfection and cleaning work is effective. Companies can make good use of the IEHQ marks to publicize that their indoor environment has been regularly and appropriately disinfected and cleaned. Employees and customers of the company can even scan the QR code on the IEHQ mark to obtain the test results of the testing site, which greatly strengthens the confidence of staff and the public. The IEHQ service plan lasts for 12 months. CMA Testing team will regularly test and inspect the site every quarter in order to ensure the working environment of enterprise achieve satisfactory hygiene level for quite a long period of time.

"With You · Against Virus" Scheme

Owing to the reopening of schools took place in a "phased manner" in late May and with the success cases of IEHQ service adopting in different industries, CMA Testing further extended this service into education sector by rolling out "With You · Against Virus" Scheme which provided inspection service and Indoor Environment Hygiene Quality (IEHQ) testing including a COVID-19 infection screening test and various bacteria tests to HKSAR Education Bureau registered schools, including kindergartens, primary and secondary schools at free of charge so as to provide healthy and safe school environment for students.

Nearly a month since after the launch of "With You · Against Virus" Scheme, around a quarter of the HKSAR Education Bureau

registered schools proactively joined the Scheme and some of the schools that have been tested have achieved excellent level ranked under the Scheme and our team has given professional advice for improvement to schools. With the positive feedbacks of the Scheme, some schools would continue to apply for our one-year IEHQ program on top of the free Scheme. In the coming future, CMA Testing will keep review and make adjustments to the Scheme or service in response to the epidemic, in the hope that a good school environment can be made ready for students in new school term.

New Development

Under the dynamic market change coupled with the wave of "re-industrialization", CMA Testing not only provides diversified testing services, but also supports enterprises in upgrading and transformation to cope with the future development likes environmental protection, genetic technology, Internet of Things+, artificial intelligence, smart city and new energy etc., creating business opportunities for local industry.

With the enhanced living standards, everyone has shown much more attention and concern on personal health. To cope with the new market needs, CMA Testing established a subsidiary company, CaTAGene, which provides human genetic testing and accurate genotyping reports through scientific testing methods and help connect between health food suppliers and potential customers, building a tailored health improvement plan for consumers as the main goal.

Innovation and technology are important elements of "re-industrialization". CMA Testing has started cooperation with The Hong Kong University of Science and Technology and start-up company, Sundial, to develop a research and development and matching platform to connect manufacturers and innovative technologies so as to help local companies improve their production processes and achieve upgrading and transformation, result in technology commercialization. This helps enterprises to maintain their own competitiveness and stand out from the peer.

In addition, to support enterprise upgrading and transformation under the challenging business environment, CMA Testing has firstly participated in green bond services to support the sustainable development of the industry and achieve mutual benefit.

Stepping into the 40th Years of Service in Hong Kong, CMA Testing takes Hong Kong as core, and further expands its professional services to bring benefits to the Greater Bay Area. We continue to be enthusiastic, people-oriented, adventurous and curious, to provide more customized services to the society.

CMA Testing aims to enhance the quality of life to provide a safer, healthier and better environment for our lives.



資料提供 Information provided by :

CMA 檢定中心 CMA Testing

電話 Enquiry Hotline: Wesley Leung 2256 8840

電郵 Email: info@cmatesting.org



2020 年廠商會中學教育基金籌款

CMA Secondary School Education Trust Fundraiser 2020



本會於 1964 年創辦獎學金計劃，旨在鼓勵學業成績優異的學生，歷年來得蒙各位會員鼎力捐助，受惠學生累計超過 10,000 人，本會至表感謝。作為辦學團體，本會對於廠商會中學及廠商會蔡章閣中學的發展當責無旁貸。因此，本年度所籌得的款項，將用於頒發獎學金予兩所中學，以及用於兩所中學的各類校本計劃。現誠邀各位會員踴躍捐輸，有關認捐表格可瀏覽以下連結：<http://www.cma.org.hk/uploads/ckfinder/files/school.pdf>。

倘有查詢，歡迎與本會聯絡及社會服務部吳小姐（電話：2542 8621）或郭小姐（電話：2542 8625）聯絡。



CMA established the Scholarship Programme in 1964 to encourage students with excellent academic performance. CMA would like to express our sincere gratitude to the support from members throughout the years, enabling over 10,000 students to be benefited from the Programme. As the sponsoring body of the CMA Secondary School and the CMA Choi Cheung Kok Secondary School, it is the responsibility of the CMA to ensure the schools' development. Hence, the proceeds from the fundraiser this year would be awarded to the two secondary schools for scholarships and various types of school-based programmes. The CMA sincerely invites corporate members to enthusiastically donate for the cause. Please browse the following link to view the relevant form : <http://www.cma.org.hk/uploads/ckfinder/files/school.pdf>.

For enquiry, please contact Ms NG (tel: 2542 8621) or Ms KWOK (tel: 2542 8625) of the CMA Liaison & Community Services Department.



Zip®

HydroBoil®



澳洲捷寶牌飲水機

For Smarter Kitchens!

The world leader in **boiling** water

Australian
Made



有效**過濾鉛**及
其他有害物質

清潔純淨 飲出健康



方便美觀
省卻儲存水瓶的煩惱

HydroTap®

查詢熱線 | (852) 2330 6678

只須手指一按
沸點滾水源源供應

金融界及醫院護理中心
廣泛採用

總代理 | 恒達熱水系統

www.berlin1967.com

中小企資援組： 資助基金推廣全面觀 2020 八月網上見！

SME ReachOut Fund Fair Everywhere 2020
See You Online in August



身處中小企業或初創企業的你，是否正為拓展業務的資金而煩惱？「中小企資援組：資助基金推廣全面觀 2020」讓你不受地域限制，於網上一站式瀏覽全港多個由特區政府成立的支援計劃及不同類型的資助基金項目，助你全方位認識各基金詳情和申請資訊，裝備自己大展拳腳！

因應環球經濟及疫情對中小企的嚴重打擊，剛於今年初成立的「中小企資援組」(SME ReachOut) 將於 8 月 24 至 26 日，在網上舉行「中小企資援組：資助基金推廣全面觀 2020」，集齊超過 40 多個來自不同政府機構的基金項目，涵蓋金融及商業發展、初創及創新工業、粵港澳大灣區、可持續發展及專門行業，不論你的業務發展至哪個階段，也可找到合適的資助基金，以落實你的升級轉型計劃。

為期三天的活動，不但帶來嶄新的網上展覽體驗，更籌備了至少 25 場網上研討會和成功案例分享會，以助中小企業和初創企業逆境中自強、開拓新市場及持續式轉型。中小企資援組 (SME ReachOut) 亦已整裝待發，將於活動期間在網上即時解答企業對於申請政

府資助基金的疑難，亦會為企業提供支援及基金配對，協助企業尋找機遇。

未來變幻莫測，機遇要靈活掌握！立即登記參加「中小企資援組：資助基金推廣全面觀 2020」！



了解詳情及登記



資料提供 Information provided by :
香港生產力促進局 Hong Kong Productivity Council
電話 Enquiry Hotline: 2788 5555
電郵 Email: service@hkpc.org

As a SME or startup, are you worrying about the funds for business development? "SME ReachOut Fund Fair Everywhere 2020" allows you to browse a number of supporting schemes rolled out by the HKSAR Government and different funding programmes available in Hong Kong at one-stop online without any geographical limitation, to learn the details and application information of each funding scheme, equipping yourself for further development.

In light of the unprecedented challenges to SMEs due to the global economic downturn and widespread epidemic, "SME ReachOut", a dedicated service team commenced operation earlier this year, will organise "SME ReachOut Fund Fair Everywhere" 2020 online from 24 to 26 August. This virtual event will showcase more than 40 funding and industry support schemes from different organisations, covering financing, business development, startups, creative industry, Greater Bay Area, sustainability and industry-specific. No matter how mature your company is, there will be some funding schemes suitable for you to implement your upgrade and transformation plan.


This 3-day event not only brings you a brand new virtual exhibition experience, but also at least 25 webinars, information



中小企資援組: 資助基金 推廣全面觀
SME ReachOut: Fund Fair 2020 Everywhere
網上見
See you online
 hkpc live 免費網絡研討會

exchange sessions and workshops, for SMEs and startups to fight against the downturn, reach new markets and sustain business transformation. "SME ReachOut" is also ready to promote the Government funding schemes during the event, and provide support and fund matching for SMEs to explore business opportunities.

This enriched platform will provide you with flexible funding opportunities. Register now to join the "SME ReachOut Fund Fair Everywhere 2020"!



For details and registration fundfair.hkpc.org

本會活動速遞 CMA Focus

8 2020 年
月份活動
August Event



「『遙距營商計劃』 Dos and Don'ts」
網絡研討會
日期 Date : 18 / 8 / 2020
查詢電話 Enquiry Hotline : 2542 8635 (曾小姐)



「內地勞動合同解除與終止的操作實務」
網絡工作坊
日期 Date : 21 / 8 / 2020
查詢電話 Enquiry Hotline : 2542 8635 (曾小姐)

9 2020 年
月份活動
September Event



廠商會名人飯堂 - 馬介欽副會長
CMA VIP Luncheon - VP Dr Ma Kai Yum
日期 Date : 待定 TBC
查詢電話 Enquiry Hotline : 2851 1555



參觀「柯尼卡美能達」 Digital Solutions Square
Visit "Konica Minolta" Digital Solutions Square
日期 Date : 11 / 9 / 2020 (暫定 TBC)
查詢電話 Enquiry Hotline : 2851 1555

歡迎推薦工商友好加入廠商會大家庭

請掃描 QR Code
下載會員入會申請表





《象志點評》- 關心人生 - 「住」與「投資」的可持續發展



《象志點評》- 關心人生 - 當「醫療」遇上「奢侈品」

婦女委員會 - 抗疫自強 愛心送暖行動



婦女委員會 - 「家家 + 魚」慈善派魚活動

香港第一家電熱水爐廠
柏林牌為香港電熱水器業開創先河
1967年至今在香港製造

若非品質有保證 何能扎根 超越半世紀

< 廠在土瓜灣 歡迎參觀 >



<http://www.berlin1967.com>

溫馨提示

根據香港特別行政區政府《商品說明條例》

4201 原產地標籤的規定

目前並無法例規定在本港銷售的貨品必須貼上原產地標籤。

精明消費者購買電器前先查詢產地來源，並比較其他同類貨品，不同牌子的售價及產品功能，廣告內容可能誇張或誤導，若買入物非所值的貨品就會浪費金錢及後悔。

berlin™
Since 1967

柏林牌



1967年首創純不銹鋼內膽
安全耐用

1,000升
▲
20升
容量

恆達熱水系統設計有限公司

Tel (852) 2330 6678

Fax (852) 2764 4034

Email sales@berlin1967.com

物流及供應鏈多元技術研發中心 (LSCM) 「居安抗疫」系統

Logistics and Supply Chain MultiTech R&D Centre (LSCM) StayHomeSafe System

由2020年年初起，新冠肺炎於全球肆虐，導致大量人士患病，嚴重患者甚至死亡。直至現時為止，各國都正實行不同措施，希望阻止疫情蔓延。

而物流及供應鏈多元技術研發中心 (LSCM) 早於今年1月底開始與政府資訊科技總監辦公室、各政府部門及夥伴機構合作，研發「居安抗疫」系統，以支援特區政府的檢疫措施，從而阻止新冠肺炎疫情於本港蔓延。系統可協助偵測接受家居檢疫的人士有否留在檢疫地點。如偵測到受檢疫人士離開檢疫地點或手環被破壞，系統便會發出警報，通知有關人員作出相應行動。

「居安抗疫」系統由電子手環、流動應用程式及其管理系統組成。LSCM 團隊除了研發電子手環外，也用上不少時間進行防水、防震等測試和品質檢驗，以確保電子手環及系統在不同情況下，仍能正常運作。系統利用低功耗藍牙技術、近場通訊技術及地理圍欄技術監測受檢疫人士是否身處檢疫地點。而電子手環並沒有應用全球定位追蹤技術，以保障佩戴者的個人私隱。LSCM 團隊自開始研發系統以來，一直努力提升系統的運作效率，令受檢疫人士在佩戴手環時更為方便。

「居安抗疫」系統應用至今一直有效協助減緩新冠肺炎於本地蔓延。而不少東南亞、中東及歐洲等國家及地區之公私營機構亦向我們查詢有關系統的研發及應用，希望利用這個系統來支援當地的檢疫措施，這亦證明 LSCM 的技術研發實力得到海外機構的認可。

待新冠肺炎的疫情過後，「居安抗疫」系統可轉為應用於長者服務，協助照顧者看顧獨居長者及腦退化症患者，惠及不同人士。

Starting from early 2020, the COVID-19 pandemic has been affecting a large number of people and causing deaths in many countries. Different countries have implemented different measures to curb the spread of the disease as it is still being spread around the world lately.

As early as late January this year, Logistics and Supply Chain MultiTech R&D Centre (LSCM) has started to develop the StayHomeSafe System in collaboration with the Office of the Government Chief Information Officer (OGCIO), various government departments and our partner organisations to support



the HKSAR Government's quarantine measures, aiming to help contain the spread of COVID-19 in Hong Kong. The System was developed and designed to detect if the people under quarantine are staying in their dwelling places. If they leave their dwelling places or the wristband is damaged, an alert will be triggered to notify the relevant officials for follow-up actions.

The StayHomeSafe System consists of an electronic wristband, a mobile application and the corresponding backend application. In the process of developing the electronic wristband, the LSCM teams had spent much effort in the testing and quality control procedures to ensure that its waterproof and anti-vibration functions worked well under different conditions. The System utilises BLE, NFC and Geo-fencing technology to detect the presence of the quarantined person in their dwelling places. GPS technology is not utilised in the electronic wristband so as to protect the privacy of the quarantined persons. The LSCM teams have striven to enhance the System throughout the months to make it more convenient for the users.

As the StayHomeSafe System has been effective in helping to contain the spread of COVID-19, we have received many enquiries from both the private companies and government authorities from Southeast Asia, the Middle East and Europe, etc., about the development and application of the System in order to support their countries' quarantine arrangement, which is a recognition of LSCM's research and development capabilities.

In the future, the System can be adopted in elderly services to help the caregivers to look after the singleton elderly and those with dementia, benefiting different communities.



資料和相片提供 Information and photo provided by :
物流及供應鏈多元技術研發中心
Logistics and Supply Chain MultiTech R&D Centre
電話 Enquiry Hotline: 3973 6200
電郵 Email: info@lscm.hk
網址 Website : www.lscm.hk



CMA 良倉 購物 無界限



香港中華廠商聯合會
The Chinese Manufacturers' Association of Hong Kong



CMA 良倉
e-warehouse

同時歡迎零售及批發
商機盡掌握

查詢電話: 2851 1555



譽峰國際有限公司
蔬菜脆脆輕小食
<https://www.tanford.com.hk>



鴻發號糧油食品有限公司
專訪執行董事兼合規主任
葉錦昌先生
www.hungfatho.com.hk



浚達國際市務有限公司
"Smart Clean" UV
除蟻吸塵機
www.smartech-intl.com



華彩印刷有限公司
專訪市務總監
史昊洛先生
www.brilliant-group.com



鯉魚門紹香園有限公司
專訪負責人
劉比利先生
www.walnut.com.hk



雅暉創意產品有限公司
專訪負責人
曹漢暉先生
www.toeasepro.com.hk



疫症下的惜食堂

Food Angel amidst the Covid-19 Pandemic

「惜食堂」是小寶慈善基金於 2011 年開展的首個食物回收及援助計劃，宗旨為「停止浪費·解決飢餓·以愛相連」。「惜食堂」團隊以「讓施與受同享豐盛生命」作為願景，致力向本地飲食界回收仍可安全食用之剩餘食物。

現時已有超過 400 間飲食企業及機構成為惜食堂的食物捐贈伙伴，每星期平均回收約 35 公噸剩食。另外，惜食堂亦歡迎個人捐出其仍可安全食用的食物，只要是未過期、未開封及沒有腐爛的包裝食物，均可送到我們指定的食物收集點或食品收集箱內。從各個途徑所收集的剩食會首先通過嚴格的食物安檢程序，再經由中央廚房烹煮成營養均衡的飯餐，最後由物流團隊免費派發給社會上需要食物援助的朋友。除了透過惜食堂社區中心及慈善機構伙伴提供堂食服務外，惜食堂亦相繼於深水埗及筲箕灣區設立外展隊伍派發熱飯餐、湯水及食物包，為長期病患、行動不便及獨居隱蔽在家中的長者送上問候與關懷。

有賴社會各界的支持，惜食堂的運作規模正持續擴充。我們於 2016 年開設惜食分餉站，每天為超過 12,000 份飯餐提供已處理的瓜菜；而在 2019 年落成的豐膳坊則採用先進的「速凍」技術，在無添加防腐劑的情況下完整保存食品的品質，為服務使用者提供保質期長達 4 日的食物，使我們的服務更具彈性。

同時，惜食堂亦十分重視公眾教育，先後成立以學校為本的「綠惜學堂」、為企業而設的「企業天使」，以及實體展館「粒粒皆辛館」。以多角度，多元化的活動，向學生、企業員工、市民宣揚惜食及關愛訊息。

近日新型冠狀病毒持續肆虐，惜食堂的服務亦遭受到前所未有的打擊。惜食堂雖然會如常運作，但為了遏止疫情在社區擴散，我們將原有逢星期一至五的熱餐服務改為一星期派發兩天速凍餐以滿足服務使用者一星期所需，以減低他們在領取飯餐過程受感染的風險。

在此呼籲各界人士在疫情期間繼續向惜食堂捐贈防疫物資、食物及餐券，本會會將所收集到的物資轉贈給惜食堂服務使用者及經各區的慈善機構伙伴派發予有需要人士。大家如有意捐贈各類防疫物資，可與惜食堂接洽。

資料及圖片提供

Information and photos provided by :

惜食堂 Food Angel

電話 Enquiry Hotline: 2801 5333

電郵 Email: info@foodangel.org.hk

網址 Website: www.foodangel.org.hk



超過 95% 的愛心膳食及食物包會送到我們的合作機構（包括：社區中心、教會、籠屋住戶及特殊殘疾中心），再轉送到有需要人士手上。

Over 95% of Food Angel's nutritious meals and food packs are delivered to our partners (including: Community Centres, Religious Groups, dwellers living in cage homes and special disability centres) and redistributed to those who are in need.



我們致力向本地飲食界回收仍可安全食用之剩餘食物，減少浪費。

Endeavouring to rescue edible surplus food from different sectors of the food industry to reduce the amount of waste.



將食物烹煮製成營養均衡及充滿愛心的熱飯餐。

Preparing the rescued food and turn them into nutritious hot meals with a dash of love.



為服務使用者送上溫暖。

Providing food and warmth for service users.

Food Angel is a food rescue and food assistance programme launched in 2011 by Bo Charity Foundation with the mission of "Waste Not, Hunger Not, With Love". With the vision of "Let lives be enriched through giving and receiving", Food Angel endeavours to rescue edible surplus food from different sectors of the local food industry.

Food donation partners of Food Angel currently involve over 400 catering companies and organisations, and 35 tonnes of edible surplus food are rescued each week. Besides, Food Angel welcomes individual donation of edible food. Packaged food items, which are not expired, intact, and not rotten, can be dropped off at designated Food Collection Points or Food Collection Box. Surplus food items that are collected via various means would pass through stringent safety protocols before being prepared as nutritious hot meals in our central kitchen and then redistributed for free by the logistics team to those in need of food assistance in the community.

Aside from providing dine-in service through the Food Angel Community Centre and charity partners, Food Angel had established outreach teams in Sham Shui Po and Shau Kei Wan to distribute hot meals, soup and food packs in order to provide care and support to elderly with chronic illnesses, impaired mobility, and living alone.

Thanks to the support from various sectors of the community, Food Angel has been continuously expanding our scale of operation. Since 2016, the Food Station has been launched to provide processed vegetables for over 12,000 hot meals; while the Harvest Mill launched in 2019 employed advanced cook-chill technology to retain the quality of food products without adding any preservative. Cook-chill meals have a shelf life as long as 4 days, enabling us to provide more flexible services.

At the same time, the Food Angel highly values public education, and has established the school-based program "Green Angel", "Corporate Angel" for corporations, and an experience centre "Foodstep Journey" so as to promote the message of cherishing food and caring others to students, corporate employees and the public.

As the Covid-19 Pandemic continued to develop, the services of the Food Angel had also encountered an unprecedented blow. Although the Food Angel would operate as usual, to prevent the pandemic from spreading in the community, in lieu of the hot meal service from Monday to Friday, cook-chill meals would be distributed twice a week to meet the weekly needs of service users and reduce the possible risk of infection when receiving the meals.

We would like to take this opportunity to appeal to the public for their continuous donation of protective gears against Covid-19, food items and food vouchers to the Food Angel during the Pandemic. Food Angel would re-distribute the supplies received to our service users, and to those who are in need through Charity Partners in different regions. Please contact us if you are interested in donating various kinds of protective gears.



透過熱飯餐及食物包作為媒介，為長者送上問候與關懷。

Sending greetings and care to the elderly by means of hot meals and food packs.



惜食堂以「以愛相連」為宗旨，攜手協助減少食物浪費及關懷社會上需要食物援助的人士。

Following the mission "With Love", Food Angel works in partnership to support the reduction of food waste and care for those in need of food assistance in the society.

大昌行全新尚譽汽車館 觸目登場 引入進口 Toyota Alphard 及 Vellfire

長達 6 年大昌行保用 · 日本本土版 最強配備 · 全新或易手車 多元選擇 · 100 個中港澳服務站 · 24 小時緊急支援

Exclusive Collection

尚譽汽車館

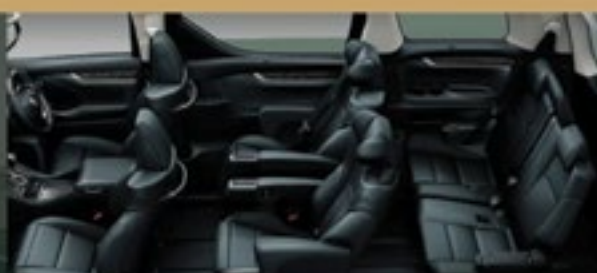
by HKMC



DCH 2020 Toyota Alphard SC



Toyota Safety Sense 安全系統



豪華舒適黑色皮革內籠



最新直噴引擎及 8 速波箱



☎ 2262 1118

📍 金鐘海富中心 1 座

🌐 bit.ly/dchalphard



NAMI
Materials

嶄新技術及先進材料

有效擊退、過濾或殺滅細菌及病毒



擊退

斥菌技術

- 不含可釋出殺菌劑
- 防止細菌及病毒在物件表面滋生



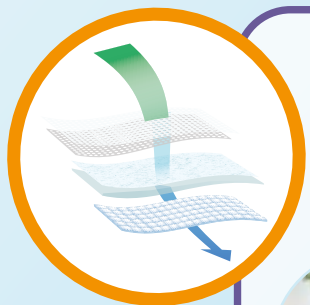
斥菌食品紙包裝



斥菌衛浴用品



斥菌塑膠水瓶



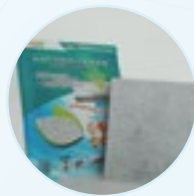
過濾

納米纖維

- 過濾空氣中的懸浮粒子 (PM1.0、PM2.5、PM10)
- 去除細菌及病毒
- 重複清洗後能保持過濾效率



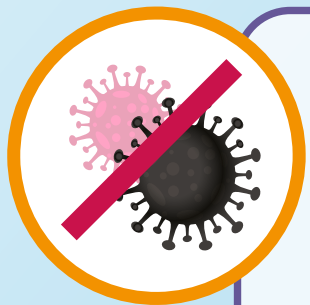
超HEPA等級過濾膜



高效除菌納米濾網



N95級別納米口罩



殺滅

等離子技術

- 殺滅細菌及病毒
- 不會釋出有害物質

納米塗層

- 防止細菌及病毒在物件表面積聚
- 抑制微生物生長

納米氣泡

- 大幅提升消毒效能



抗菌防塵納米塗層



等離子空氣淨化器



自清潔抗菌搪瓷板



抗菌抗病毒塗層



光催化塗層/過濾器



納米氣泡消毒系統



作為材料專家, NAMI以各項創新技術與本地業界合作進行先進材料的領先應用研究及促進技術成果商品化



會員工商批發告示專欄

Notice for Members' Business Wholesale



產品名稱：R6P, AA, 碳性電池, R6P, AA, Zinc Carbon Batteries, Super Heavy Duty

公司名稱：Camelion Enterprises Limited

會員編號：009485

批發數量及價格：200,000 pcs (RMB0.33)

產品介紹：

- 成熟可靠的電池技術 (Reliable battery technology)
- 經濟實用 (Outstanding price and quality)
- 無汞，無鎘環保型電池 (No mercury and cadmium added to the formulation)
- 可應用於遙控器、鬧鐘、電筒、玩具等設備 (Major applications: Remote control, Clocks, Torches, Toys and so on)

聯絡人：莫志明 (Fernando Mok)

聯絡電話：2954 9352

查詢電郵：sales7@camelionbattery.com

網址：www.camelionbattery.com



產品名稱：型號：VR-30-1 名稱：紫外線 (UV) 空氣消毒系統

公司名稱：其力行有限公司

會員編號：011759

批發數量及價格：批發 20 套起訂, unit price : HKD1,650.00/pc

產品介紹：以高能量紫外線輻射 (UV-C 波段) 可以引起微生物內的 DNA 發生不可逆轉的破壞，從而使微生物不能繁殖，並且死亡。
詳情可參考以下網址：
<https://bit.ly/2M8d70L>

聯絡人：Wanda Lee

聯絡電話：2470 9690

查詢電郵：sales@cliffon.com.hk

網址：www.cliffon.com.hk



產品名稱：意大利黑松露醬 500G

公司名稱：鴻發號糧油食品有限公司

會員編號：013037

批發數量及價格：1 箱起 (每箱 12 支) / 每樽 HKD198

產品特點：來自意大利黑松露醬，是廚師的，適合素食，炒蛋，炒菜

聯絡人：Christy Cheung

聯絡電話：2345-4491

查詢電郵：christy@hfh.com.hk

網址：www.hungfatho.com.hk

新會員介紹 Introduction of New Members



粵港澳大灣區青年之家聯盟有限公司
Greater Bay Area Youth Home Alliance Limited

代表：董健業先生 (秘書長)
產品：提供青年在大灣區創業 / 就業平台
Representative: Mr Thomas Tung Kin Yip (General Secretary)
Product: Platform provider for youth establishment in Bay area



長新亞洲有限公司
Chanson Asia Limited

代表：陳嘉信先生 (總經理)
產品：品牌服飾銷售
Representative: Mr Chan Ka Shun Jason (General Manager)
Product: Retail & wholesaling of branded garments



金源米業國際有限公司
Golden Resources Development International Limited

代表：林世晞先生 (業務發展經理)
產品：食米入口商及零售商
Representative: Mr Lam Sai Hay Adrian
(Head of Business Development and Corporate Strategy)
Product: Rice importer/ retailer



中科健康國際 (香港) 有限公司
Zhongke Health International (H.K) Co., Limited

代表：敖澤烽先生 (副總經理)
產品：保健食品
Representative: Mr Ngo Chak Fung (Deputy General Manager)
Product: Health products



萬基冷鏈物流有限公司
Bedrock Cold Chain Logistics Company Limited

代表：陳燦業先生 (董事)
產品：凍倉倉儲服務及物流運輸派送服務
Representative: Mr Mike Chan (Director)
Product: Cold storage & logistics services



和生堂株式會社 (香港) 有限公司
Waseidou Pharmaceutical (Hong Kong) Limited

代表：朱文斌先生 (顧問)
產品：血淨通、羊胎素及蠟勁
Representative: Mr Zhu Wenbin (Adviser)
Product: Health care products



世大控股有限公司
Great World Company Holdings Limited

代表：張炎強先生 (董事)
產品：精油
Representative: Mr Zhang Yan Qiang (Director)
Product: Essential oil



港中興實業有限公司
Kong Chung Hing Industrial Limited

代表：謝少龍先生 (董事)
產品：太陽鏡、老花鏡、藍光鏡及運動鏡等
Representative: Mr Tse Siu Lung (Director)
Product: Sunglasses, frames & optical

「T-box 升級轉型計劃」 助中小企拓新市場

T-box helps SMEs explore new markets with expert support

HKTDC
SME SUPPORT
中小企支援服務
T-box
Transformation Sandbox
升級轉型計劃



香港貿易發展局多年來致力協助香港中小企拓展全球商機，今年初推出了「T-box 升級轉型計劃」幫助中小企升級轉型，近日 (7月9日) 更安排參加了 T-box 的中小企與泰國駐港總領事及代表會面，了解最新優惠政策及重點發展行業。

香港貿易發展局副總裁劉會平說，泰國與香港一直是緊密的貿易夥伴，泰國亦是香港中小企拓展業務的熱點。隨着香港與東盟簽訂的《自由貿易協定》及《投資協定》涉及泰國的部份於去年 6 月生效，兩地的經濟合作便更密切。

劉會平表示，香港貿發局多年來致力協助香港中小企拓展全球商機，今年初推出了「T-box 升級轉型計劃」，透過提供免費服務，包括諮詢服務、工作坊、政府資助計劃資訊、市場資訊及企業聯繫活動等，支援本地中小企提升競爭力，協助企業在品牌推廣、電子商貿、生產及供應鏈方案、市場拓展等範疇邁向升級轉型的目標。港商普遍反應正面，並認為 T-box 有助他們提升競爭力，應對疫情帶來的挑戰。

與會者之一的怡豐機器人有限公司總經理劉義彬指出，公司主力研發自動泊車科技，預計未來東南亞國家對此有龐大需求，遂有意在泰國設立區域辦事處，並希望了解外資稅務優惠的詳情。「是項活動讓我初步掌握相關聯絡單位，以便日後跟進及建立聯繫。」

主力研發及應用智能家居科技的 Lockly，其行政助理 Gloria Chan 表示，公司在內地設有生產線，但有意在其他國家增設生產線，首選考慮是泰國，因為泰國人友善，聘請他

們為員工也易於管理。她又盛讚 T-box：「有助中小企擴闊商業網絡，所提供的服務勝在全面又免費。」

With a mission to help Hong Kong SMEs transform and upgrade, the Transformation Sandbox (T-box) programme by the Hong Kong Trade Development Council has recently arranged a meeting between the Royal Thai Consulate-General in Hong Kong and T-box members to help them explore the Thai market, creating business cooperation opportunities between the country and Hong Kong.

"Thailand and Hong Kong have long been close trading partners, and our ties have further strengthened in recent years with growth in two-way investment and new cooperation agreements such as our free trade agreement (FTA) and investment agreement," said HKTDC Deputy Executive Director Patrick Lau.

"Empowering SMEs to seize global business opportunities has always been a core task for the HKTDC," said Dr Lau, "[T-box] seeks to enhance their competitiveness in the areas of branding, e-commerce, manufacturing and supply chain solutions, and new markets," said Dr Lau. "Enrolment is free and during the three-month participation period, each T-box member can benefit from a range of offerings, including advisory services, workshops, information on government funding schemes, market intelligence and networking opportunities."

"Participants tell us the initiative has been particularly helpful in enhancing their ability to meet the business challenges of the COVID-19 pandemic," Dr Lau shared.

One happy T-box member is Simon Liu, General Manager of Yee Fung Robotics Limited, a specialist in automatic vehicle-parking technology which is expected to be in demand in Southeast Asia. He said the meeting with Thai Consulate-General representatives gave him the right contact to check details about opening a regional office in Thailand, as well as tax incentives for foreign investors.

Another T-box participant, Gloria Chan, Executive Assistant of smart home-products manufacturer Lockly, is looking to establish an additional production facility to augment the firm's existing factory in Mainland China. "We're planning to set up a new production facility, with Thailand being our top location choice because Thai people are friendly and cooperative," she explained. T-Box helps SMEs such as her company expand their network and the service is comprehensive, she said. "And it's free!"



香港貿易發展局副總裁劉會平 (左) 日前與 T-box 會員拜會泰國駐港總領事 Tull Traisorat (右)。



泰國駐港總領事 Tull Traisorat 向 T-box 會員介紹外資優惠政策。



逾 700 家港商參與 T-box，以提升競爭力，應對疫情帶來的挑戰。

「T-box 升級轉型計劃」
免費登記

Transformation Sandbox
Sign up for free



資料及圖片提供 Information and photos provided by :
香港貿易發展局
The Hong Kong Trade Development Council
電話 Enquiry Hotline: 1830668
電郵 Email: smecentre@hktcdc.org

廣州市實施粵港澳大灣區 個人所得稅優惠財政補貼五十問

50 Q&As on Guangdong Municipality's Implementation of Financial Subsidies Related to Individual Income Tax Preferential Policies in the Guangdong-Hong Kong-Macao Greater Bay Area

廣州市財政局就《廣州市關於粵港澳大灣區個人所得稅優惠政策財政補貼管理暫行辦法》的基本政策、補貼範圍、補貼程序及補貼領取等方面的內容出台了「廣州市實施粵港澳大灣區個人所得稅優惠政策財政補貼五十問」，其中內容如下：

問：廣州市實施的粵港澳大灣區個人所得稅優惠政策財政補貼主要內容是什麼？

答：《廣州市關於粵港澳大灣區個人所得稅優惠政策財政補貼管理暫行辦法》（穗財規字〔2019〕5號）明確，對在廣州市行政區域範圍內工作的境外高端人才和緊缺人才，其在廣州市繳納的個人所得稅已繳稅額超過其按應納稅所得額的15%計算的稅額部分，給予財政補貼。該補貼免徵個人所得稅。符合條件的境外高端人才和緊缺人才，按照《辦法》規定申辦相關補貼。

問：給予粵港澳大灣區個人所得稅優惠政策財政補貼的境外高端人才或境外緊缺人才需符合什麼條件？

答：根據《廣州市關於粵港澳大灣區個人所得稅優惠政策財政補貼管理暫行辦法》（穗財規字〔2019〕5號）第六條、第七條和第八條，境外高端人才，應符合《廣州市境外高端人才目錄（2019年標準）》標準；境外緊缺人才，應符合《廣州市緊缺人才需求目錄（2019年版）》標準，且納稅年度的個人所得稅應納稅所得額達到30萬元人民幣以上。境外高端人才或境外緊缺人才除符合上述條件外，還應當同時具備身份條件、工作條件及誠信條件。

問：廣州市的粵港澳大灣區個人所得稅優惠政策財政補貼計算原則主要是什麼？

答：粵港澳大灣區個人所得稅優惠政策財政補貼中的稅負差額計算原則主要是：將《中華人民共和國個人所得稅法》個人所得中的工資薪金所得、勞務報酬所得、稿酬所得、特許權使用費所得、經營所得、和入選區級以上政府或政府工作部門、直屬機構人才工程或人才項目獲得的補貼性所得等六項所得的已繳稅額納入補貼計算範圍，其餘個人所得的已繳稅額不納入補貼計算範圍。

問：境外高端、緊缺人才申請廣州市的粵港澳大灣區個人所得稅優惠政策財政補貼的辦理流程是怎樣的？



答：申請粵港澳大灣區個人所得稅優惠政策財政補貼基本程序為：個稅查詢一帳號註冊一辦理申請一部門審核一發放補貼。

有關「廣州市實施粵港澳大灣區個人所得稅優惠政策財政補貼五十問」的詳細內容，請參閱以下網站：www.cma.org.hk/uploads/ckfinder/files/QA1.pdf。

資料整理：香港中華廠商聯合會商會事務部
備註：本文稿內容以中文版為準

The Guangzhou Municipal Finance Bureau had promulgated the "Guangdong Municipality's Implementation of Financial Subsidies Related to the Individual Income Tax Preferential Policies in the Guangdong-Hong Kong-Macao Greater Bay Area" regarding the "Interim Measures of Guangzhou Municipality Concerning Administration on Financial Subsidies Related to Individual Income Tax Preferential Policies in the Guangdong-Hong Kong-Macao Greater Bay Area", including the basic policy, range and procedure of subsidy, and collection of subsidy, etc.. Some of the measures are as follows:

Q: What are the key measures of Guangdong Municipality's Implementation of the Individual Income Tax Preferential Policies in the Guangdong-Hong Kong-Macao Greater Bay Area?

A: The "Interim Measures of Guangzhou Municipality Concerning Administration on Financial Subsidies Related to Individual Income Tax Preferential Policies in the Guangdong-Hong Kong-Macao Greater Bay Area" (Sui Cai Gui Zi [2019] No.5) clarified that, overseas high-end talents and talents in shortage working in the administrative area areas of Guangzhou shall be given fiscal subsidies, where their individual income taxes paid in Guangzhou exceed the tax amount calculated at 15% of their taxable income. The subsidies shall be exempted from individual income tax. Overseas high-end talents and talents in shortage who are eligible can apply for the subsidy concerned through the Interim Measures.

Q: What are the criteria for overseas high-end talents and talents in shortage to receive Financial Subsidies Related to the Individual Income Tax Preferential Policies in the Guangdong-Hong Kong-Macao Greater Bay Area?

A: According to Articles 6, 7 and 8 of the "Interim Measures

of Guangzhou Municipality Concerning Administration on Financial Subsidies Related to Individual Income Tax Preferential Policies in the Guangdong-Hong Kong-Macao Greater Bay Area" (Sui Cai Gui Zi [2019] No.5), overseas high-end talents shall meet the standards of the Catalogue of High-level Overseas Talents in Guangzhou (standards for 2019); talents in shortage shall comply with the Catalogue of Urgently Needed Talents in Guangzhou (2019 version), and the taxable income of individual income tax in a tax year shall reach RMB 300,000 or above. Aside from meeting the above criteria, overseas high-end talents and talents in shortage shall also meet the conditions of residential, employment and credit status.

Q: What is the calculation principle of Guangzhou Municipality Concerning Administration on Financial Subsidies Related to Individual Income Tax Preferential Policies in the Guangdong-Hong Kong-Macao Greater Bay Area?

A: The calculation principle of Guangzhou Municipality Concerning Administration on Financial Subsidies Related to Individual Income Tax Preferential Policies in the Guangdong-Hong Kong-Macao Greater Bay Area is: according to the provisions of the Individual Income Tax Law of the People's Republic of China, the individual income taxes paid for the following 6 types of incomes would be included in the calculation of financial subsidies: income from wages and salaries, income from labor remunerations, income from authors' remunerations, income from royalties, business income, and subsidy income acquired from a talent project or talent program of a government at or above the district level, a government department, or an institution directly under the State Council. Other individual income taxes paid would not be included in the calculation of financial subsidies.

Q: What are the procedures for overseas high-end talents and talents in shortage to apply for the Financial Subsidies Related to the Individual Income Tax Preferential Policies in the Guangdong-Hong Kong-Macao Greater Bay Area?

A: The basic procedures for applying for the Financial Subsidies Related to the Individual Income Tax Preferential Policies in the Guangdong-Hong Kong-Macao Greater Bay Area are: enquiry of individual income tax - registration of account - make an application - approval from department - granting subsidies.

For details of "50 Q&As on Guangdong Municipality's Implementation of Financial Subsidies Related to Individual Income Tax Preferential Policies in the Guangdong-Hong Kong-Macao Greater Bay Area", please visit the following website: www.cma.org.hk/uploads/ckfinder/files/QA1.pdf

Collation: CMA Association Affairs Department
Remarks: The Chinese version of this article shall prevail.

廠商會會員尊享優惠 CMA Members' offers



購買「本木序」天然個人護理用品可享有網上商店及門市 9折優惠
查詢熱線：3956 3447



M-Chitosan
網站：<https://m-chitosan.com/en/home/>
查詢熱線：2746 5382
電郵地址：support@m-chitosan.com

於萬國國際有限公司網站使用優惠碼「CMAMC20」購買殺菌糖纖維抗菌口罩可享港幣20元折扣優惠

| 公司 | 其他尊享優惠 | 公司 | 其他尊享優惠 |
|------------------|--|-----------------------------|--|
| 一豚豬手專門店 | 凡購買滿 \$100 全單可獲九折優惠 * 此優惠不適用於豬手禮券及其他禮券 | 香港電訊 | 廠商會會員現凡申請或續約商業寬頻或電話線服務，即可享 24 個月免費「家居辦公」方案及香港電訊雲端備份服務 |
| 中之(香港)貿易有限公司 | 精選健康食品折扣優惠 | 香港綠之聖食品有限公司 | 廠商會會員可享優惠價 \$203 (原價 \$270) 購買一磅裝綠之聖猴頭菇 |
| 中國本草世界茶葉(香港)有限公司 | 各式精選產品折扣優惠 | 原燕房(亞洲)有限公司 | 憑廠商會會員證到原燕房可享以下購物優惠： 購買正價產品，可享 95 折優惠 |
| 中華航空 | 機票全年及不定期折扣優惠；多樣化產品如機票加酒店等優惠； 專設服務電郵：hkgcorp@china-airlines.com，購票即享折扣 | 浚達國際商務有限公司 | 於 Smartech 陳列室購買任何產品可享有 7 折優惠 |
| 元氣站保健會及港恩中醫診所 | 購物及診症優惠 | 軒日珠寶有限公司 | 所有玉石產品 9 折優惠 |
| 元細胞遊戲有限公司 | 單頁式網頁製作 (HK\$200 現金優惠) | 逆思策劃有限公司 | 以優惠價 \$650/10 盒 (原價 \$78/盒) 購買湯包套裝 |
| 日本命力 | 於日本命力旗艦店購物可享 9 折優惠；即場營養師體檢及諮詢服務 (價值 \$1,000) | 高比工業材料有限公司 | 3M 防曬隔熱玻璃薄膜及 3M 安全防爆玻璃薄膜供應及安裝 |
| 加拿大妙睡寧(香港)有限公司 | 精選產品折扣優惠 | 高發液晶有限公司 | 廠商會會員可享優惠價 \$198 (原價 \$248) 購買全港唯一擁有 "香港安全標誌" KONTROY PB8041 拖板 |
| 永發蔘茸海味行 | 優惠 1) 安妮佛跳牆 ~ HK\$715/4 人份 (原價 HK\$1100) 優惠 2) 安妮佛湯 ~ 海底椰雪梨蜜棗燉豬展湯 HK\$41.8/1 包 (原價 HK\$55) | 健康之路有限公司 (嗎哪有機站) | 以 95 折惠顧全線產品 |
| 老鳳祥珠寶(香港)有限公司 | 購買正價鑲嵌產品可享 78 折優惠、黃金產品半價手工費 | 健絡理療 | 廠商會會員尊享中醫診症及推拿理療 85 折優惠 |
| 自由製作 | 1. \$2500 (原價 \$3400) 專業企業形象攝錄服務，拍攝訪問短片，向外展示公司形象特徵 2. \$1400 (原價 \$1600) 專業企業形象攝影服務，拍攝公司管理層團隊照，員工團隊照、營運狀況、服務情況、工作表現等，向外展示公司形象特徵 | 常康健工房有限公司 | 各式精選健康產品折扣優惠 |
| 西聯環球商業匯款(香港)有限公司 | 於推廣期內，香港中華廠商聯合會的會員(只限公司代表人)可享以下優惠： 優惠 1) 免費開戶及首次外匯即期交易後享有 HKD 300 超市禮券 優惠 2) 首年交易手續費九折優惠 優惠 3) 30 分鐘免費風險管理與對沖方案諮詢時段 | 得利龍百貨有限公司 | 凡於「得利龍」專櫃及專門店惠顧正價貨品可享 9 折，特價貨品可享額外 95 折 |
| 位元堂 | 9 折中成藥購物優惠 (指定推廣產品除外) | 蛋撻王 | 購買酥皮或牛油皮蛋撻，即享買 5 送 1 優惠。 |
| 杏美行 | 購買【特健樂】、【金悅堂】、【Life Enhance】品牌任何產品，享有 85 折優惠 | 博達電子技術有限公司 | 購買任何正價產品，即可獲 9 折優惠。 |
| 協豐印染廠有限公司 | 到銅鑼灣崇光百貨九樓 ESPRIT 床品專櫃，購物滿港幣 1000 元，可以獲贈乙件 Esprit 素色珊瑚絨枕頭毯 | 雅芳婷有限公司 | 購買任何貨品可獲 9 折優惠 (指定貨品除外) |
| 周大福珠寶金行有限公司 | 1. 凡購買足金類產品，手工設計費可享 8 折 2. 凡購買足金類產品，即可以「換購價」選購指定首飾乙件 | 雅蘭集團有限公司 | 正價貨品 95 折優惠 |
| 尚和堂 | 以 8 折享用指定中醫治療 | 黑詐家 | 於黑詐家網店購買任何正價貨品，使用優惠碼「2005CMAME」可獲 9 折優惠，任何六件 85 折。 |
| 東億生物有限公司 | 會員凡於 www.bodysos.com 或透過電話購買東億生物有限公司正價產品可享有 88 折優惠 | 裕華國產百貨有限公司 | 正價貨品 9 折 |
| 金至尊珠寶(香港)有限公司 | 優惠一) 購買正價珠寶鑲飾，可享 88 折優惠 優惠二) 購買足金飾品，可享手工費 5 折優惠 | 零食物語 | 購物滿 HK\$150 (折實計) 可享 9 折優惠 |
| 長榮航空 | 以廠商會「企業會員」優惠價購買機票及享受不定期折扣優惠； 長榮航空訂位部企業會員專線：28109251-接通後按 6 字 | 僑豐行有限公司 | 在橫丁門市購物，正價貨品可享 9 折優惠，特價貨品可享 95 折優惠。 |
| 冠玲瓏 | 出示會員證可享額外 95 折購物優惠 | 嘉頓有限公司 | 以特惠價購買嘉頓有限公司產品，請按以下連結索取訂購表格： http://www.cma.org.hk/uploads/ckfinder/files/Garden.xlsx |
| 冠華食品菓子廠有限公司 | 正價貨品 88 折 (減價貨品除外) | 銀龍飲食集團 | 購買 \$1,000-「銀龍禮券」，即可額外免費獲贈 \$100- 銀龍禮券 (每張面值 \$50.00) |
| 恆香老餅家有限公司 | 全店正價貨品 9 折優惠 | 鈞耀有限公司 | 以 85 折購買濕紙巾產品 |
| 恒昌隆燕窩參茸行有限公司 | 「恒昌隆燕窩蟲草養陰寶」優惠價 \$398 (原價 \$498)，強肺抗疫之選，香港製造。 | 德記五金發展有限公司 | 全店正價貨品 8 折優惠 |
| 美味棧國際有限公司 | 惠顧全線產品可享有 95 折優惠；購物折實價滿 \$1000 或以上，可享免費送貨服務 (離島地區另議) | 毅創來集團有限公司 | MEC YS 系列附帶 USB 充電插位拖板 9 折優惠 優惠 1) 免費頭皮詳細健康檢測，納米能量健髮護理及智能微頻頭療護理一次 優惠 2) 髮再生中藥洗髮露 / 藥液 (7 折) 優惠 3) 髮再生護髮及健髮療程 (8 折) |
| 香江會滙天下茶業有限公司 | 優惠 1) 凡購買滙天下 (THE BARN) 及曬瓜 (XIGUA) 正價產品，尊享 85 折優惠。 優惠 2) 凡購買曬瓜香江紅正山小種，尊享 5 折優惠 (原價 \$800/盒) | 髮再生 | 各式精選打印機耗材產品折扣優惠 |
| 香港加德士 | 憑能源咭加油專享特惠折扣優惠 | 澳栢國際有限公司 | 凡購買酒品每款 12 支或以上，可享有 8 折優惠 |
| 香港美利酒店 | 廠商會會員尊享香港美利酒店住宿優惠，Superior 客房每房每晚由港幣 \$2,000 起 | 懋康企業有限公司 | 購買任何正價產品，即可獲 9 折優惠。詳細產品資料及售價可在網店 www.shopablehealth.com 查看 |
| 香港華美粵海酒店 | 訂房、用餐及足底按摩優惠 | 聯財有限公司 | 優惠 1) 堂食惠顧午市套餐可享 9 折優惠 優惠 2) 堂食惠顧主餐牌可享 8 折優惠 |
| 香港郵政 | 香港中華廠商聯合會的會員 (只限公司申請人) 成功開立特快專遞帳戶，並於開戶後首三個月內使用特快專遞「標準服務」、「萬用箱服務」或「貨運服務」投寄急件，便可獲贈價值港幣 200 元的餐飲或購物禮券，並每次獲得 10% 郵費回贈 (回贈金額合共高達 1,000 港元) 的迎新優惠，投寄一件急件即可享回贈！ | 韓讚 | 正價貨品 65 折優惠 |
| | | 麗豐國際(香港)保健品有限公司 | 優惠一) 預繳租用 3 至 5 個月，可享 9 折優惠 優惠二) 預繳租用 6 至 12 個月，可享 8 折優惠 |
| | | 蘋果迷你倉 | 優惠 1) 訂購 \$650 以上 (折實價)，全單可享 9 折及免費送貨 優惠 2) 買滿 \$650，可享贈品一件 下載訂購表格連結： https://bit.ly/2X83kge |
| | | Blackmores | 正價貨品 9 折優惠，詳細產品資料及售價可查閱網店： www.diverxu.com |
| | | Diverxu Ltd | 經 eCup 預購飲品手機 App 訂購任何飲品及食品，即可享有 9 折優惠 |
| | | eCup HK Limited | 面部療程及身體療程七折優惠 |
| | | MENCE | 於 OTO 專門店購買定價貨品，即可享 95 折優惠 |
| | | OTO Bodycare (H.K.) Limited | |

優惠詳情請參閱本會網站 For offer details, please visit CMA website : www.cma.org.hk/tc/menu/60

csl.

企業計劃

5G買機上台計劃

80GB

月費 \$506

300GB

月費 \$776

150GB

月費 \$596



送



Samsung Galaxy Buds+
無線耳機
(建議零售價 \$1,298)

送



Samsung 薄型背蓋
(建議零售價 \$198)

SAMSUNG
Galaxy S20 5G

(12GB+128GB)
(建議零售價: \$6,998)

36 個月合約

「5G」服務計劃使用5G網絡。只適用於指定5G網絡覆蓋地區及客戶需使用指定可支援的裝置。然內客戶所體驗之實際速度會少於網絡規格，並會因應所使用之裝置、地點、網絡情況及其他因素而有所影響。

4G攜機上台計劃

送



AirPods 配備充電盒
(建議零售價 \$1,299)

2卡共享

12GB

每月

\$366

24個月合約

以上圖片只供參考，一切以實物為準。



掃描此QR code登記上台

Question?



商業熱線 120 888

此服務計劃只適用於持有有效商業登記證用戶及供應予您有關之業務使用。如公司之商業登記於承諾期屆滿前失效，香港移動通訊有限公司(「CSL」)保留權利將服務計劃更改為1010的當前收費。· 服務計劃所包含的服務受該服務之條款及限制約束(如有及知悉)，詳情請瀏覽我們的網頁<https://www.hkcs.com/>。· 推廣期至2020年9月30日適用於新客戶及續約客戶。· 有關詳情，請致電商業熱線120888查詢。· CSL保留一切決定之最終決定權。



香港中華廠商聯合會會員尊享優惠

體驗全新iPad Pro帶來的工作效益



Apple iPad Pro
11-inch
(128GB Wi-Fi + 流動網絡)
建議零售價: HK\$7,499

免費

加簽

3 個月合約

全新 Apple Pencil
建議零售價: HK\$999

加簽

9 個月合約

精妙鍵盤
(適用於11吋iPad Pro)
建議零售價: HK\$2,299

加簽

12 個月合約

盡享以上 **雙重** 禮品

6GB + 6GB

每月 \$467
(24個月合約)

有關更多最新/5G 服務計劃，
歡迎致電/WhatsApp查詢：

Kevin Chan
M: 9214 7916
E: Kevin.KC.Chan@hkcsf.com



Alice Wong
M: 6058 8434
E: Alice.MY.Wong@hkcsf.com



此服務計劃只適用於指定企業之在職員工使用，離職或退休員工並不適用此服務計劃。香港移動通訊有限公司保留權利更改於承諾期屆滿之前離職或退休員工所申請之企業員工服務計劃為其他1010服務計劃。此服務計劃只限網上申請續約之客戶。服務計劃月費為\$469，月費由\$160/\$90。您另須繳付每月\$18之港幣/陸港/流動電話牌照/行政費，及簽訂24/27/33/36個月承諾期。月費由續約時起計。若於承諾期屆滿之前終止合約，您須支付提前終止費用，即剩餘承諾期的月費總和，我們亦有可能向您收取你所獲取的禮品及獎品價值總和。△此服務計劃包括本地流動數據每月12GB，其後本地流動數據網絡規格將會被降至上限128kbps。當你的每月用量達到速度限制執行時，你所體驗之實際速度會相當地少於最高下載速度。服務計劃內包含之使用量只供該帳單月內使用，餘額不能累積至下一個帳單月並會於該帳單月被取消。服務費用須透過指定信用卡以自動轉帳繳交。服務計劃所包含的服務受該服務之條款及細則約束(如有及如適用)，詳情請瀏覽我們的網頁www.1010.com.hk。推廣期至2020年7月31日。CSL保留一切決定之最終決定權。以上圖片只供參考