



詳情請瀏覽
YouTube頻道



預約及查詢: 2708-8198, 5407-5467 www.xpower.com.hk XPower Hong Kong XPowerHK

*不包括人為損壞及受指定條款約束

客戶廣告

CMA

Monthly Bulletin

4月號 Apr Issue 2020

香港工業再展翅 · 締造輝煌新一頁



廠商會與業界共渡時艱 和香港市民同心抗疫

CMA weathers the storm with business sectors and unite with the public to fight the pandemic



香港中華廠商聯合會
The Chinese Manufacturers' Association of Hong Kong



主席：蔡少森 常務會董
委員：吳國安 副會長
李慧芬 常務會董
顏明潤 常務會董
尹德輝 常務會董
胡詠琚 常務會董
孔憲榮 會董

大綱 Index

- P. 1-3 廠商會與業界共渡時艱
和香港市民同心抗疫
CMA weathers the storm with business sectors and unite with the public to fight the pandemic
- P. 4 政府積穀防饑 還須及時救急
The Government should store up grain against dearth and rescue in time
- P. 6-7 生產力局推半價優惠措施助中小企
HKPC Offers Half-Price Concessions to Partner with SMEs
本會活動速遞
CMA Focus
- P. 8 「心思心意」郵票特別訂製服務
讓顧客按照喜好製作精美實用的郵票禮品
Heartwarming Stamps Customised Service Enabling the Order of Attractive and Useful Bespoke Philatelic Gifts
- P. 10 城大成功研發精準癌症血液檢測技術
CityU's new blood test technology for accurate detection of cancer cells
- P. 11 會員交易告示專欄
Notice for Members' Trade Items
- P. 12 CMA MAKERS
- P. 14 內地復工復產
支持政策查詢工具及政務應用
Inquiry tools and administrative applications in support of work resumption
- P. 16 搜羅物資 聯繫捐助
香港中華基督教青年會與工商企業同心抗疫
Collects charity goods for needy Chinese YMCA of Hong Kong joins hands with the business sector to combat Coronavirus
- P. 17 新會員介紹
Introduction of New Members
- P. 19 廠商會會員尊享優惠
CMA Members' offers



新型冠狀病毒肺炎疫情嚴峻，令香港經濟雪上加霜，不少中小企更面臨巨大的經營壓力。香港中華廠商聯合會（本會）時刻關心業界情況，早於 2 月以電話訪問形式了解會員企業在疫情期間的情況。受訪企業涉獵不同業務範疇，包括製造業、進出口貿易、零售批發及餐飲等。當中，有超過一半以上在內地設有廠房或分公司，至於企業規模方面，有約 7 成為聘用少於 50 人的中小企。

根據企業的回應，目前最困擾的包括：市場需求大幅減少、因停工或停業而拖延生產進度或影響業務運作、交通或物流受阻，以及無法或難以購買足夠和必需的防疫用品等；更有近半企業表示收入減少達 5 成以上。面對目前的挑戰，企業最希望得到的援助是租金扣減，其次是即時的現金資助、稅務扣減，以及包括水、電和營業牌照的減免。此外，有在內地設廠的會員表示，疫情令生產停頓，嚴重打擊了供應鏈運作，加上沒有現金流補給的情況下，企業的營運遭受到難以逆轉的衝擊。

為協助會員應對，本會採取了一系列措施包括：及時和持續發布與疫情相關資訊、邀請屬下法律顧問就內地與工業相關的各類政策和問題製作簡易指南，並進一步為個別企業提供法律建議以供參考，以及設立查詢熱線，為會員解答因疫情引發各類的勞資問題。

除了業界，本會亦時刻關顧民生，有見疫情凶險，站在前線的醫護人員承受着巨大壓力，為表達關懷，遂於 2 月 18 日推出「與『護』同行，齊心抗疫」計劃，首階段與瑪嘉烈醫院的員工餐廳合作；於午膳時段，向院內的醫護人員送上靚湯、糖水或滋潤熱飲，為他們加油和充電，計劃得到該院醫護們的熱烈回響。本會更策動一眾會員，紛紛為各醫院送上不同的食品 and 物資，為醫護人員打氣！至 3 月 5 日，本會再推出一系列由屬下會員提供的醫護人員專屬優惠，有超過 40 家廠商會、香港品牌發展局會員，以及工展會的參展企業參與；即日起至 5 月底期間，合共提供超過 130 項專屬產品及服務優惠，涵蓋保健品、護理用品、健康食材、家庭電器及各式服務等，部分產品更低至 5 折發售。凡醫護人員於交易時出示有效的本地醫護相關工作證件，即可尊享各項優惠。至於第二輪的「與『護』同行」，本會將聯同富士高實業控股有限公司，並透過醫管局的支持，向各大「龍頭醫院」送出合共 100,000 個口罩，以應他們所需。我們將竭力發揮守望相助精神，與香港市民一起，齊心抗疫！！

支持與「護」同行，齊心抗疫計劃

廠商會會董會成員捐款名單

姓名	廠商會職銜	捐款金額 (HK\$)
楊孫西	永遠名譽會長	10,000
史立德	第一副會長	50,000
徐晉暉	第二副會長	2,000
黃震	副會長	2,000
盧金榮	副會長	10,000
吳國安	副會長	3,000
馬介欽	副會長	10,000
蔡衍濤	名譽會長	8,500
蔡德河	名譽會長	3,000
曾金城	名譽會長	2,000
陳淑玲	常務會董	5,000
李慧芬	常務會董	2,000
梁兆賢	常務會董	10,000
鄧燾	常務會董	10,000
蔡志婷	常務會董	3,000
尹德輝	常務會董	5,000
沈運龍	常務會董	3,000
胡詠琚	常務會董	3,000
蔡少森	常務會董	5,000
王象志	常務會董	3,000
馬偉武	會董	10,000
錢耀棠	會董	2,000
李惠中	會董	20,000
賴偉星	會董	2,000
施榮恆	會董	50,000
陳鴻基	會董	500
駱百強	會董	5,000
吳榮治	會董	10,000
劉智穎	會董	2,000
林蘭詩	會董	2,000
王淑筠	會董	5,000
楊靜	會董	2,000
劉宗明	會董	2,000
陳日強	會董	3,000

捐贈抗疫物資名單

捐贈者 / 公司名稱	捐贈物資	數量
吳宏斌會長	外科口罩	10,000
吳永嘉議員	外科口罩	15,000
洪克協永遠名譽會長	吉野家和風牛肉飯現金券	300
洪明基會董	超群杏仁條	300
黃家和副會長 (香港頤康基金會)	點點綠 – 有機黑杞子	500
楊志雄常務會董	外科口罩	50,000
陳家偉常務會董	天然免疫維他命礦物質奧米加3 液體配方	3,000
李國明會董	安心寶 - 濕紙巾	1,200
孫榮良會董	Pasion 酒精搓手液 50ml	300
余瓊峰會董	美味棧藜麥咸餅乾	240
黃偉鴻會董	“日匠本物” 米果	2,000
廠商會青年委員會	外科口罩	2,500
	消毒搓手液	500
栢榮行有限公司	免洗手消毒啫喱 50 套 (每套包括 500ml 和 150ml 各 1 支)	50
美國太子行 (香港) 有限公司	美國太子牌原枝花旗參茶包	5,000
永興醫藥化學有限公司	消毒搓手液 50ml	896
艾橋生物科技製造有限公司	AQ 殺菌淨化多功能配方試用裝 7ml	600
美佳亞太投資有限公司	女性天使 PHD 天然植物纖維材質衛生巾	3,600
長盈行	免洗手消毒啫喱 500ml	2,000



The dire development of the novel Coronavirus infection added fuel to the fire for Hong Kong's economy, resulting in tremendous stress on the management of Small and Medium Businesses (SMEs). The Chinese Manufacturers' Association of Hong Kong (CMA) has been paying close attention to the current situation and is concerned about the circumstances of the business sector. Earlier on, CMA has conducted a phone survey with our member corporations regarding the effect of the Coronavirus and their response plans. The surveyed corporations comprised various business categories, including manufacturing, import and export trade, retail and whole-sales, food catering, etc. Over half of the respondents set up factories or branches in the Mainland; as for enterprise size, around 70% of the respondents are SMEs with less than 50 employees.

According to the corporations' responses, they are currently most troubled by (i) reduced number in orders or customers; (ii) delayed manufacturing schedule or operation affected due to the halt in work and production; (iii) prolonged transportation or logistics; and (iv) failure or difficulties in procuring adequate and necessary epidemic prevention supplies. Nearly half of the corporations expressed that their income has decreased by more than 50%. In face of the current challenge, the corporation indicated the most desirable aid would be a reduction in rent; while immediate funding and subsidies, tax reduction, as well as a reduction in water and electricity bills and licensing fee are listed as the second most desirable aid. Besides, members with factories in the Mainland commented that they are facing tremendous pressure in their operation as the suspension in production severe blow the supply chain and there is no replenishment to their cash flow. The operation of the enterprise has suffered an irreversible shock.

In order to get through this difficult time together, CMA implemented a series of support measures to assist our members in weathering the crisis caused by Coronavirus, including (i) timely announcement of relevant information regarding Coronavirus; (ii) invite CMA legal representatives to compile guidelines on the various industrial-related policies and issues in the Mainland, and provide legal advice for members' references; (iii) set up consultation hotline to provide advice on labour relations problems arising from the Coronavirus.

Aside from business sectors, CMA also concerned about the society. Front-line medical staff are also under immense pressure. In order to show our care, CMA had launched "Stand with Medical Staff and Fight As One" Programme on 18 Feb 2020. The programme collaboration with the staff canteen of the Princess Margaret Hospital at the first stage, CMA provide healthy soup, sweet soup or hot drinks to medical staff during lunch hour to express our care and appreciation. The event was very well-received by the medical staff. Besides, CMA has motivated members send food and supplies to each hospital. On 5 Mar, CMA further announced a series of exclusive promotions provided by our member corporations to medical staff to assist them in unwinding and relaxing. Over 40 members of CMA and Hong Kong Brand Development Council, as well as participants of Hong Kong Brands and Products Expo took part in the exclusive promotions to provide promotion for a total of 130 exclusive products and services from now until the end of May. The promotions include health care products, personal care products, healthy food, home appliances, and various services, some prices are even reduced by half. Medical Staff are eligible for the discount upon presentation of a valid employment credential during check out. As for the second round of "Stand with Medical Staff and Fight As One" Programme, CMA collaborates with Fujikon Industrial Holdings Limited, and with the support of the Hospital Authority, will send a total of 100,000 masks to the hospitals for their needs. CMA will show the spirit of watch and help, and with the people of Hong Kong to fight the Coronavirus As One.



政府積穀防饑 還須及時救急

The Government should store up grain against dearth and rescue in time

今年第一季剛剛結束，「埋單計數」，顯然易見，在新冠疫情肆虐和全球金融危機的雙重打擊下，本港經濟正式步入衰退，同時企業經營困難，失業率攀升也無可避免。幸好，特區政府過去一直秉持審慎理財原則，確保香港財政穩健、積穀防饑，並錄得豐厚的儲備。正如財政司司長在二月公佈《預算案》時提到：「香港現時的財政儲備約一萬一千億元，讓我們有能力在經濟逆境下推出特殊措施，例如發放現金。」

現時本港百業蕭條，不少中小企均面對資金鏈斷裂問題。首先，政府將於中小企融資擔保計劃下推出百分百擔保特惠貸款，並以官方資金作為借貸資金來源，而企業不需要接受財政及退款能力審批，舒緩企業的財政困難。雖然有關措施仍然有待立法會財務委員會通過，但救市急如星火，希望政府加快相關籌備工作，不用讓業界「等到頸都長」。另外，目前建議每間企業的最高貸款額為六個月僱員薪金及租金的總和或 200 萬元，以較低者為準。如果疫情持續，政府應該考慮進一步放寬額度，以及將「還息不還本」的六個月期限，延長至和九成信貸擔保產品的最長 12 個月看齊。

其次，企業過去申請「中小企融資擔保計劃」時，一直面對「政府擔保，銀行不借」的問題，以至未能真正受惠。最近，香港金管局繼去年 10 月將銀行的逆周期緩衝資本比率由 2.5% 下調至 2% 後，日前宣布進一步把比率由 2.0% 下調至 1.0%，這將為銀行額外提供 5000 億元的放貸額度，增加市場的流動資金。借此機會，我希望銀行可以採取更加進取的態度，放寬對中小企的借貸，與工商界和中小企同舟共濟，共渡時艱。

最後，我想指出，就算《預算案》有各項寬減措施，未必間間公司受惠，金額也不算多；政府又推出貸款保證計劃，但正所謂「借錢便要還」，幫到的始終有限。中小企業現在最重要是怎樣有現金流，希望政府可以及時救急。

目前世界的經濟已經響起警號，若「負資產」重臨，情況將不堪設想。社會上有聲音認為，政府應該盡快撤銷樓市「辣招」，避免經濟大起大落。我認為，如果政府擔心全面「撤辣」會影響民生，至少可以討論對非住宅的工商物業「撤辣」的可行性，這樣對於過去幾年買了工商物業的商界來說，可謂多了一個選擇，將手頭物業套現來「自救」，增加他們財務上的彈性。

The first quarter of this year has just come to an end. As coronavirus rages with global financial crisis, it is evident that Hong Kong's economy has officially entered into a recession.



At the same time, business operations are getting more difficult and mounting unemployment rate seems to be unavoidable. Fortunately, the SAR Government have always been managing public finances in accordance with the principles of fiscal prudence, keeping expenditure within the limits of revenues, and committing resources only where justified. In the past, they have ensured that we have healthy public finances with preservation of revenue base and ample reserves, to cope with the fiscal challenges ahead. As the Financial Secretary mentioned in the Budget Speech in February, "Hong Kong's current fiscal reserves of about \$1,100 billion enable us to roll out special measures amid the prevailing economic downturn, such as paying out cash."

It has been reported that with Hong Kong experiencing months of social turmoil and epidemic outbreak, many local industries have become languished, and the numbers of Mainland and overseas visitors have plunged. Many small and medium-sized enterprises (SMEs) are facing the problem of capital chain rupture. First, the HKMC Insurance Limited (HKMCI) will introduce special 100 percent Loan Guarantee under the SME Financing Guarantee Scheme (SFGS). The new measure aims to alleviate the burden of paying employee wages and rents by SMEs which are suffering from reduced income, thereby helps minimizing enterprises in shutting down and layoffs. Although the relevant measures are required to obtain approval of funding from the Finance Committee of the Legislative Council, I hope that the government will expedite the relevant preparatory works without letting the industries to wait for ages. In addition, the maximum amount of loan per enterprise under the Special 100% Guarantee Product is up to the total amount of employee wages and rents for six months per enterprise, or \$2 million, whichever is the lower. If the epidemic continues, the government should consider further lessening the immediate repayment burden of enterprises by extending the principal moratorium for the first six months and only be required to pay interest in the first six months to the same level of 12 months equivalent to the 90% Loan Guarantee Product under the SFGS.

Secondly, when companies applied for the SME Financing Guarantee Scheme in the past, they had been facing the problem of "government guarantees and banks not borrowing", so that they could not be truly benefited. Recently, the Monetary Authority announced that the countercyclical capital buffer (CCyB)

for Hong Kong is further reduced to 1.0% from 2.0%. Lowering the countercyclical capital buffer at this juncture will allow banks to release additional loans of about 500 billion focusing on supporting SMEs. Besides, this measure can be more supportive to the domestic economy and help mitigate the economic cycle as the banking sector can act as a "shock absorber" in times of stress, rather than as an amplifier of risk to the broader economy. I would like to take this opportunity to urge the banks in adopting a more aggressive stance by further relaxing the restrictions on loan especially for the SMEs. As we collaborate towards common goals, Hong Kong can ride out the difficult times as soon as possible and regain momentum in going forward.

Finally, I would like to point out that even if there are various concessionary measures proposed in the Budget, many companies still may not be benefited and the corresponding amounts are relatively small. Currently, the most important thing for the SMEs is how to obtain cash flow in sustaining daily operations and I hope that the government can help them out in a timely manner.

At present, the world economy has sounded a warning sign. If the resurgence of negative equity era comes into existence, the consequences would be unimaginable. There have been opinions in the need of revocation of property cooling measures introduced by the government as soon as possible to avoid economic upheaval. In my opinion, if the government is worried that the overall removal of property cooling measures will affect people's livelihood, at least we can discuss the feasibility of removing those measures regarding non-residential, industrial and commercial properties. I believe that this can increase the financial flexibility of those who have bought their industrial and commercial properties in the past few years.

文稿提供：

立法會『工業界「第二」』
議員吳永嘉先生，BBS，太平紳士

Article provided by:

The Hon **Ng Wing Ka, Jimmy**, BBS, JP
Legislative Council Member (Industrial-Second), HKSAR

Zip®

HydroBoil®



澳洲捷寶牌飲水機

For Smarter Kitchens!

The world leader in **boiling** water

Australian
Made



有效**過濾鉛**及
其他有害物質

清潔純淨 飲出健康



方便美觀
省卻儲存水瓶的煩惱

HydroTap®

查詢熱線 | (852) 2330 6678

只須手指一按
沸點滾水源源供應

金融界及醫院護理中心
廣泛採用

總代理 | 恒達熱水系統

www.berlin1967.com

生產力局推半價優惠措施助中小企

HKPC Offers Half-Price Concessions to Partner with SMEs



最新資訊盡在
HKPC Live
網絡研討會及
線上培訓課程

所有企業
培訓課程
買三送一

研發及顧問
項目人員定價

同時減價
5成

測試服務
人員定價

場地租借

生產力局 12.3 推半價優惠 助中小企抗逆升級

* 「中小企」定義：聘用少於 100 名員工的製造業公司和聘用少於 50 名員工的非製造業公司；「初創企業」定義：成立兩年內為限。

** 優惠受相關條款及細則約束。



因應香港以至環球面對不明朗前境，生產力局推出特別紓緩措施，由 2020 年 3 月 12 日至 2020 年 9 月 30 日向中小企及初創企業* 提供服務半價優惠**，與業界夥伴攜手應對未來挑戰。

半價優惠適用於所有（一）研發及顧問項目人員定價（獲政府資助計劃的顧問項目除外）、（二）測試服務人員定價，以及（三）場地租借費用。而所有企業培訓課程的「買三送一」優惠會在上述期內繼續適用，而且不限於中小企業。

另外，企業亦可透過生產力局最近推出的「HKPC Live」網絡研討會及網上培訓課程，維持與業界交流和推動企業增值轉型步伐。



資料提供：香港生產力促進局
查詢電話：2788 5555
電郵：service@hkpc.org



優惠措施詳情

HKPC Offers Half-Price Concessions to SMEs from 12.3

HKPC Live
info webinars & online trainings

all corporate training courses
Buy-3 Get-1-free

ALL 50% OFF

the list price of labour portion for R&D and consultancy services

the list price of labour portion for testing services

HKPC venue charges

Amid difficult business environment, Hong Kong Productivity Council (HKPC) announced special relief measures to offer SMEs and Startups*, half-price concession** from 12 March 2020 to 30 September 2020, joining hands with industry partners to overcome the challenges brought by various external factors.

The 50% discount special offer applies to the list price of labour portion for R&D and consultancy services (excluding consultancy services under government funding schemes), the list price of labour portion for testing services and the HKPC venue charges.

In addition, the "Buy-3, Get-1-free" offer for all corporate training courses, not only limited to SMEs, will sustain during the same period. Meanwhile, companies can also leverage HKPC's recently introduced "HKPC Live" webinars or online training platform to keep abreast of industry peers and the pace of upgrading or transforming your business without delay.



Source : Hong Kong Productivity Council
Enquiry : 2788 5555
Email : service@hkpc.org



Details on half-price concessions

本會活動速遞 CMA Focus

4 2020 年
月份活動
April Event



「疫情下勞資雙方的法律權益」網絡研討會
(抗疫「贏」商講座系列之四)

Serial Webinar: Legal Rights of Employers and Employees during the Covid-19 Epidemic

日期 Date : 6/4/2020

查詢電話 Enquiry Hotline : 2542 8635(曾小姐)



廠商會中小企抗疫工商支援措施網絡交流會
(抗疫「贏」商講座系列之五)

Serial Webinar: CMA anti-epidemic supporting measures for SMEs

日期 Date : 7/4/2020

查詢電話 Enquiry Hotline : 2851 1555

歡迎推薦工商友好加入廠商會大家庭

請掃描 QR Code
下載會員入會申請表

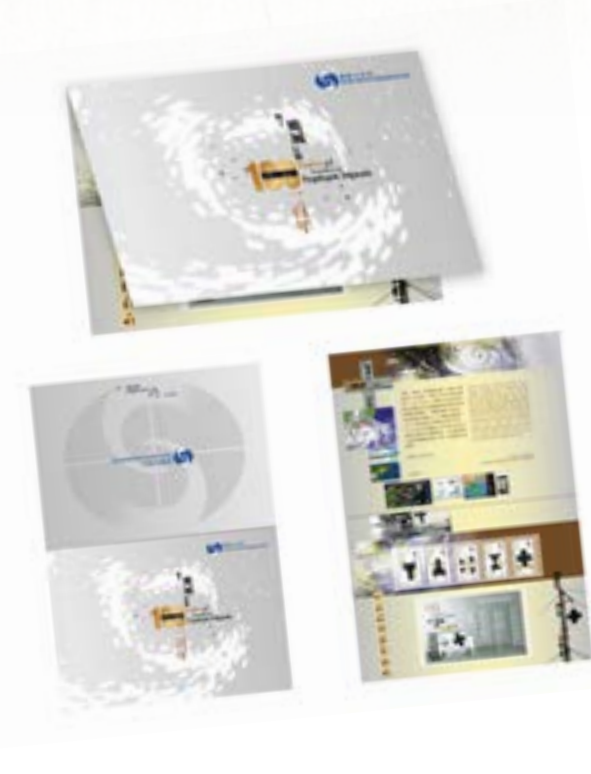


「心思心意」郵票特別訂製服務

讓顧客按照喜好製作精美實用的郵票禮品

Heartwarming Stamps Customised Service

Enabling the Order of Attractive and Useful Bespoke Philatelic Gifts



郵票套摺 Ordinary Stamp Pack

心思心意郵票「歲次庚子(鼠年)」 Heartwarming Stamps "Year of the Rat"

對於企業機構而言，揀選合適的禮物實在是一門藝術。香港郵政提供的「心思心意」郵票及尊貴禮品訂製服務可讓企業以郵品製作企業禮品。企業可按喜好選擇「心思心意」郵票的樣式，再加上具代表性的圖片或字句，製作度身訂造的「心思心意」郵票。香港郵政更可為企業機構製作印有其商標及資訊的郵票套摺，讓「心思心意」郵票可更妥善保存，加強企業形象。在自行設計的紀念封上貼上「心思心意」郵票並蓋上指定日期的特別郵戳，會是推廣活動或周年慶典的絕佳之選。

為慶賀庚子鼠年，香港郵政最近推出新的「歲次庚子(鼠年)」心思心意郵票小版張，自選圖像配合巧鼠賀歲的主題郵票，更添節日氣氛。不論饋贈親友、自用珍藏或用作企業禮品，均屬不二之選！

有意訂製「心思心意」郵票的顧客，可親臨郵票策劃及拓展處及全線「快圖美」分店訂購。顧客亦可利用「一站式」網上訂購服務，經「UR Photo」及「快圖美」網站提交訂購申請，並親自在網上設計屬於自己的郵票小版張。

It is truly an art to choose the right gift, especially so for corporate gifts. But look no further as Hongkong Post offers Customised Services for Heartwarming Stamps, premium gifts and souvenirs, enabling corporates to customise their ideal philatelic corporate gifts. Corporates can select their preferred style of stamps from a wide range of designs and tag characterised photos or messages to create their bespoke Heartwarming Stamps. We also offer the option of fitting the stamps in special stamp packs with corporate logo and information to keep the stamps in proper storage and project the desired corporate image. Affixing the stamps on a self-designed souvenir covers datestamped with a special postmark would also be a perfect choice for your promotion events and celebrations of anniversary.


To celebrate the Year of the Rat, Hongkong Post has launched the "Year of the Rat" Heartwarming Stamps mini-pane lately. Stamps pairing selected images with the theme of the Year of the Rat enliven the festive mood for your special occasions, making them a unique choice as gifts for your loved ones, for personal collection or as corporate gifts.

Customers who wish to order their Heartwarming Stamps are welcome to visit Hongkong Post Stamps or any Fotomax stores in person. You can also design your own stamp mini-pane and place your orders online using the "one-stop" service on the websites of URPhoto or Fotomax.



珍貴郵票套摺 Prestige Stamp Pack

詳情可瀏覽
For further information, please visit <https://stamps.hongkongpost.hk/stamp/detail2/6ce44f3b-814d-474e-827d-54314607d185>



香港第一家電熱水爐廠
柏林牌為香港電熱水器業開創先河
1967年至今在香港製造

若非品質有保證 何能扎根 超越半世紀

< 廠在土瓜灣 歡迎參觀 >



<http://www.berlin1967.com>

溫馨提示

根據香港特別行政區政府《商品說明條例》

4201 原產地標籤的規定

目前並無法例規定在本港銷售的貨品必須貼上原產地標籤。

精明消費者購買電器前先查詢產地來源，並比較其他同類貨品，不同牌子的售價及產品功能，廣告內容可能誇張或誤導，若買入物非所值的貨品就會浪費金錢及後悔。

berlin™
Since 1967

柏林牌



1967年首創純不銹鋼內膽
安全耐用

1,000升
▲
20升
容量

恆達熱水系統設計有限公司

Tel (852) 2330 6678

Fax (852) 2764 4034

Email sales@berlin1967.com

城大成功研發精準癌症血液檢測技術

CityU's new blood test technology for accurate detection of cancer cells

香港城市大學(城大)的生物醫學研究團隊，成功研發出精準癌症早期篩查和疾病監測的突破性技術，病人只需透過 4 毫升血液檢查，五分鐘後即可分選出癌細胞，準確率逾九成，讓病人盡快得知患癌風險；同時可監測藥物在治療過程中的療效。

這項透過「微流控芯片上的細胞操控與檢測技術平台」研發的技術，主要針對血液中的循環腫瘤細胞，可精準檢測癌細胞，小至 0.1 毫米的腫瘤亦能及早發現，而且全程以血液檢查，即液體活檢方式就能檢測，毋須進行手術抽取組織檢查。

研究團隊由城大賽馬會動物醫學及生命科學院署理院長兼楊建文講座教授(生物醫學)楊夢甦教授領導，主要成員包括城大生物醫學系高級副研究員鄒恒博士、余瑋健博士及徐濤博士。

現時要斷定病人是否患上癌症，常見的檢查方法包括影像檢測及以手術抽取病人腫瘤組織作化驗，亦可測試血液當中腫瘤分泌出來的蛋白標記物，但相關技術的靈敏度和特異性一般只有 50% 至 60%，並不屬於精準檢測。

由城大團隊研發的癌症早期篩查產品，大幅提升了液體活檢的準確度，特異性及靈敏度均達到 90% 以上，甚至能比影像檢查提早三至六個月發現癌症，即使患者的腫瘤少至 0.1 毫米，在影像學上尚未能確診為癌症，亦能通過 4 毫升血液測試被發現出來，而且只需五分鐘就能將癌細胞篩分出來，分選速度為該原理技術全球最快。

余博士說：「我們取得的突破，就是透過微流控技術及細胞表面標誌物作識別，檢測循環腫瘤細胞的速度是全球最快的，而且準確度亦十分高。」

此技術亦可應用於測試病人是否對藥物有抗藥性，有助醫生定期分析患者是否需要換藥或者轉換治療方案，且準確度亦進一步提升。

鄒博士表示：「我們希望病人透過超早期的篩查及監控病情，能夠及早作出治療，以免錯過了最佳的診治時間。」

城大已將此技術授權予由研究團隊成立的初創企業 - 晶准生物醫藥集團有限公司，其開發的產品已獲中國國家食品藥品監督管理總局(NMPA)認證，並於短期內獲得歐盟體外診斷醫療器材(IVDD) CE 認證。

如欲查詢有關技術資料，請與林依雯女士聯絡。
電話：3442 7353 或電郵：priscilla.plam@cityu.edu.hk。



鄒恒博士(左)、余瑋健博士及其他生物醫學系團隊成員研發出精準癌症早期篩查和疾病監測的突破性技術。
Dr Henry Zou Heng (left), Dr Edwin Yu Wai-kin, and other members of the biomedical research team develop technology that can accurately perform early screening for cancer cells and effectively monitor disease status.

Groundbreaking technology that can accurately perform early screening for cancer cells and effectively monitor disease status has been successfully developed by a biomedical research team at City University of Hong Kong (CityU).

With an accuracy rate of over 90%, the new technology can detect cancer cells with as little as 4 ml of blood in no more than five minutes, allowing a patient to know his or her risk of cancer as soon as possible. The new technology can also monitor the effectiveness of drugs used for medical treatment.

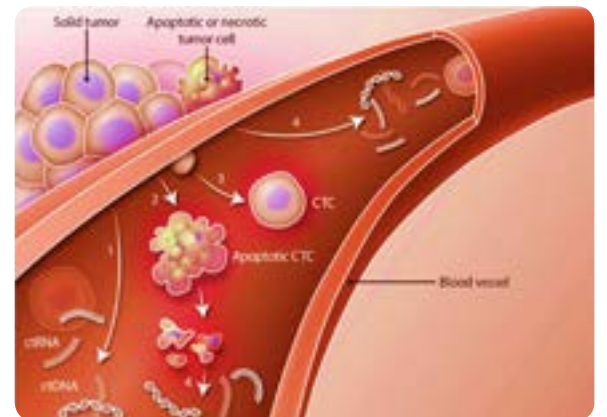
Developed from the "cell manipulation and test platform based on microfluidic chip technology," the process can accurately identify tumour cells circulating in the blood. Without requiring patients to undergo surgery, the technology can detect tumours as small as 0.1mm in the early stages of cancer.

Led by Professor Michael Yang Mengsu, Acting Dean of the Jockey Club College of Veterinary Medicine and Life Sciences and Yeung Kin Man Chair Professor at Biomedical Sciences at CityU, key members of the research team include Dr Henry Zou Heng, Dr Edwin Yu Wai-kin and Dr Xu Tao, all Senior Research Associates in the Department of Biomedical Sciences at CityU.

Conventional means for cancer diagnosis such as medical imaging and tissue biopsy aren't accurate enough. Testing blood for protein markers produced by a tumour has a sensitivity and specificity of only around 50 to 60%.

The accuracy of blood tests for liquid biopsy has been significantly improved by the screening technology developed by CityU's research team, with high sensitivity and specificity of over 90%. The technology can screen for cancer three to six months earlier than medical imaging can. For instance, medical imaging might not detect tumours as small as 0.1mm where as CityU's new technology can detect cancer cells in as little as 4 ml of blood and within five minutes, which makes it currently the fastest screening technology in the world.

"Our breakthrough research achievement is to examine circulating tumour cells within the shortest time in the world and with high accuracy through the use of a microfluidic chip and tumour surface marker detection," Dr Yu said.



城大團隊所研發的技術主要針對血液中的循環細胞(CTC)，小至 0.1 毫米的腫瘤都能及早發現。
The new technology developed by CityU's research team can detect circulating tumour cells (CTC) in blood. Tumours as small as 0.1mm in the early stages of cancer can be detected.

The new technology can also be used to test whether cancer patients have drug-resistance problems, which can help doctors decide if new medication or treatment is required.

"We hope that patients can receive treatment quickly through extremely early screening and accurate monitoring of disease status," Dr Zou said.

CityU has licensed this newly developed technology to Cellomics International Limited, a start-up company set up by the research team. The products invented by the company have received accreditation from China's National Medical Products Administration, and will be awarded the CE marking certification of in vitro diagnostic devices from the European Union shortly.

If you have any enquiries related to this technology, please contact Ms Priscilla Lam at 3442 7353 or via email priscilla.plam@cityu.edu.hk.

會員交易告示專欄

Notice for Members' Trade Items



會籍部一直致力提升會員之間的溝通及交流，為此「會員月報」(CMA Monthly Bulletin) 將新設「會員交易告示專欄」，免費為會員刊登買賣徵求告示，藉著龐大的會員網絡，冀能協助促成交易，互惠互利。有興趣刊登專欄的會員，敬請填妥連結 (<http://www.cma.org.hk/uploads/ckfinder/files/sell.pdf>) 內的回條並連同一張產品相片 (如有，必須 jpeg 檔及大小 2MB 或以上)，先以電郵 (以 Word 檔回傳) 逕交會籍部 (電郵：mandy@cma.org.hk) 作審批，本會將有專人聯絡及跟進。倘有垂詢，請致電會籍部服務熱線 (電話：2851 1555)。

The Membership Department always endeavours to enhance the communication and exchange amongst members. In this light, the CMA Monthly Bulletin will establish a new "Notice for Members' Trade Items", which is free of charge for members to publish requests for selling or buying items. Through the extensive membership network, it is hoped that the Notice Column could assist in forging trades and facilitating mutual benefit. Members who are interested in placing a notice should complete the reply slip in the link (<http://www.cma.org.hk/uploads/ckfinder/files/sell.pdf>), attach a photo of the product (if any, in jpeg format and file size of 2MB or above), and send an Email (in word file format) to the Membership Department (Email: mandy@cma.org.hk) for approval. CMA staff will follow-up and contact respective members. For enquiries, please call the service hotline of the Membership Department (Tel: 2851 1555).



產品名稱：天然奧米加 -3 三文魚油丸
公司名稱：阿斯麥香港有限公司
會員編號：010667
價格：\$ 388

產品特點：萃取自挪威冰冷海域生長的高質三文魚，先進的低溫提取技，無化學添加，三文魚的全面營養、奧米加 -3 及其特有的橙紅色護眼抗氧化元素蝦青素得以保存。天然純淨，容易吸收，適合孕婦、嬰兒、一家大小食用。奧米加 -3 有助暢通心腦血管，增強思考力及記憶力，並可改善眼乾不適，滋潤及修護關節。

聯絡人：梁小姐 / 謝小姐
聯絡電話：23682772
查詢電郵：hk@aximed.hk
網址：www.aximed.no



產品名稱：柯尼卡美能達 抗疫 商務錦囊 3 寶
公司名稱：Konica Minolta Business Solutions (HK) Ltd
會員編號：013127
價格：\$ 148

產品特點：新型冠狀病毒持續擴散，不少企業安排員工在家工作，柯尼卡美能達推出「商務錦囊 3 寶」，以超短合約月費優惠提供在家辦公方案，包括虛擬辦公室、在家使用公司電話號碼及遠距存取檔案，協助企業維持業務運作正常！

聯絡電話：25652111 (柯尼卡美能達熱線)
查詢電郵：bhkg_sales@bhc.konicaminolta.com
網址：www.bit.ly/2QGWrQv



產品名稱：香港歐雞蛋餅仔
公司名稱：零食物語
會員編號：009942
價格：\$ 85

產品特點：金黃色蜂巢形狀加上脆口口感的「雞蛋餅仔」，以上等雞蛋加入牛油及麵粉製成，帶著雞蛋仔的香甜滋味，將香港著名地道小吃的味道帶給親友共享啦！香港製造，蛋味香濃，即開即食，無須等候。

聯絡電話：27979967 (顧客服務熱線)
查詢電郵：contactus@fancy-talent.com.hk
網址：www.okashiland.com



產品名稱：美國太子牌威州原枝花旗參茶包
20 包盒裝
公司名稱：美國太子行 (香港)
會員編號：009560
價格：\$ 228

產品特點：清熱降火，補中益氣，醒腦提神，滋潤養顏，止渴生津，寧神安睡，固本培元，增強抵抗力。老少咸宜，常飲有益。100% 美國威斯康辛州地道花旗參全天然成份 不含防腐劑、色素及人工添加劑。

聯絡人：Ambrose Yau
聯絡電話：23148919
查詢電郵：ambroseypop@gmail.com
網址：www.princeofpeace.hk

會員會客室



香港中華廠商聯合會 秘書服務有限公司



香港中華廠商聯合會秘書服務有限公司致力提供專業和優質的公司秘書及一站式商業服務。包括成立香港及海外有限公司、法定公司秘書、註冊地址及代收郵件、虛擬辦公室、安排會計及核數服務等。

現時更推出會員價 HK\$8,720 免除成立公司服務費的成立公司全包優惠。

查詢熱線：3652 7676

信用報告 (Credit Report) 「查冊」了解買家公司狀況 四月底前可享 7 折優惠



助企業掌握買家 最新償付貨款能力

經濟持續疲弱，中小微企仍需努力經營，遇到新買家時或會有所疑慮，而現有買家又會因應經濟情況而隨時要求加長付款數期。無論是前者或後者，買家信用報告可協助中小微企了解買家的營運情況和財務資料，除可有效管理買家不償付貨款風險外，亦可作出準確和快速的業務合作決定。

由現在至 2020 年 4 月 30 日，客戶經本會購買商業信用報告可享 7 折優惠。

	普通 折扣後定價(港元)	特快 折扣後定價(港元)
中國	7 折 \$2,170	7 折 \$2,590
美國	(原價 3,100)	(原價 3,700)
其他國家 或地區	7 折 \$2,450	7 折 \$2,870
	(原價 3,500)	(原價 4,100)

支付寶 (Alipay) 中國 / 香港已可在全線辦事處使用信用報告服務查詢及索取報告
樣本熱線：2344 3380

或瀏覽：www.CMAcredit.com.hk

婦女委員會 - 電台節目「新紫荊廣場」



婦女委員會 - 工展敬老同樂日



廠商會推出 「活動策劃中介服務」 會員專享特別折扣優惠

香港中華廠商聯合會推出「活動策劃中介服務」，為中小企提供適切及全面的方案。現夥拍香港青少年發展聯會屬下社會企業「青雋項目策劃公司」，為中小企承辦各類活動，包括產品發佈、企業宣傳、周年慶典、員工晚宴及開業招待。服務範疇非常全面，包括項目構思及策劃以至製作和現場管理等等。

歡迎聯絡本會商業服務發展部

查詢電話：2542 5710

電郵：bsd@CMA.org.hk

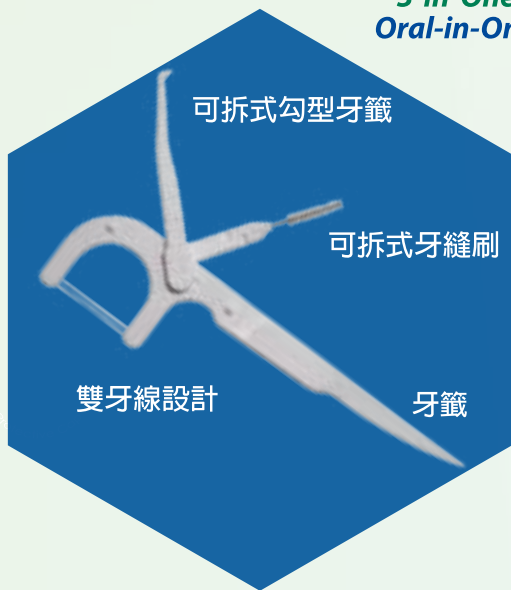
WORLD **Daily** WIDE®
國際美活

全方位潔淨

多效合一
多功能牙線棒



可拆式



三合一
多功能牙線棒



摺疊式



1支攪掂晒

✓ 刷淨牙齒

更貼合牙型，更有效刷淨牙齒。

✓ 刷淨牙齦

兩邊V型長刷毛，更有效刷淨牙齦。

✓ 按摩牙肉

兩邊V型長刷毛可同時清潔牙齦及按摩牙肉，有助保持牙肉健康。



新創
V型+弧面牙刷



新創
V型牙刷



新創
V型兒童牙刷

銷售點：



及各大藥房有售



e-Shop



HKTVmall



淘寶



國際美活



Facebook



Instagram

WORLD WIDE DAILY HOLDINGS CO., LTD.
國際美活集團有限公司

國際文具集團成員 Member of World Wide Stationery Holdings Co., Ltd.

Tel: (852) 2426 4921 E-mail: sales@worldwide-daily.com

WhatsApp: (852) 9035 5063 Website: www.worldwide-daily.com



內地復工復產

支持政策查詢工具及政務應用

Inquiry tools and administrative applications in support of work resumption

復工復產 支持政策



因應新冠肺炎疫情持續，國家及地方政府就企業復工復產出台了不少的支持政策，為方便企業查詢和應用，有關當局亦提供了查詢工具和政務應用，其中包括：

國家層面

1. 「復工復產支持政策一鍵查」專欄

中國政府網推出「復工復產支持政策一鍵查」專欄，按照企業、個體工商戶、省份、問題種類檢索。用該搜索功能得以方便查閱，搜索結果綜合列舉，還附有政策解讀。參考網址：www.gov.cn/zhengce/qiyefugongfuchanzczlc/index.htm

2. 支持中小企業政策庫

有見目前很多政策均提到對大、中、小、微企業提供不同的扶持辦法，而有關的企業規模類別則依據行業類別、從業人員、營業收入、資產總額等指標或替代指標進行劃分。中國政府網聯合工信部中小企業局推出疫情防控支持中小企業政策庫，內有國家政策和地方政策，可手機掃描葵花碼進入查詢，當中亦有中小企業規模類型自測工具。



廣東省層面

1. 「粵商通」APP- 企業訴求響應平台

為加強線上政務服務，積極推進各部門「不見面」業務辦理，廣東省政府在「粵商通」APP開設企業訴求響應平台，企業可以及時反映生產經營面臨的用工、融資、稅務、出口等問題，系統將根據企業屬地和問題歸類原則，將訴求精準分發到各地市有關部門。各地市組建專責小組和安排具體經辦同志，實行首接負責製，努力實現「企業有呼，政府必應」。

2. 「粵商通」APP- 融資貸款申請

為了進一步強化金融支持和服務保障，全力配合做好新冠肺炎疫情防控工作，促進廣東經濟平穩發展，廣東省出台了《關於加強中小企業金融服務支持疫情防控促進經濟平穩發展的意見》，概括為「三降三免一放寬」。企業亦可在「粵商通」APP首頁點擊「融資貸款」，或選擇「小微企業和個體工商戶服務專欄」- 融資貸款申請，進行融資貸款產品查詢和申請。企業亦可以在線一鍵申請抗疫貸款。

National and local governments have launched various policies in support of work resumption under threat of the COVID-19. Tools and administrative applications are also introduced to facilitate enterprise s' inquiries and use. They include:

National level

1. "One-key search of policies in support of work resumption" Webpage

On the "One-key search of policies in support of work resumption" webpage launched by the Chinese government, users may browse by different categories of enterprise, individual industrial/commercial household, province and issues. The user-friendly device lists all results searched with key words together with explanations of policies. Link to webpage: www.gov.cn/zhengce/qiyefugongfuchanzczlc/index.htm

2. Policy data bank for SMEs

Currently, many policies include various methods to support large enterprises, SMEs and micro-enterprises, and the enterprise scale is categorized by such indicators or surrogate indicators as type of industries, employees, operating income and total asset value. The gov.cn launched the SME policy databank jointly with Department of Medium & Small Enterprises, MIIT in support of SMEs in infection control. The databank provides information of national and local policies, users may search with a scan of the code. You will find self-testing tools devised for SMEs.



Guangdong Provincial level

1. "YueShangTong" APP - a platform to deal with enterprises' problems

In order to strengthen online administrative services to support various departments perform their duties "without face-to-face contact", the Guangdong provincial government set up a platform on "YueShangTong" APP to promptly hear opinions about issues which an enterprise may face in production and operation, such as employment, financing, taxation and exports. The system categorizes enterprises by place of business and issues so that their demands are transferred to the right department in different regions and cities, where task forces are set up and officers are designated to deal with the requests. This helps fulfil the government's pledge of "handling all problems raised by enterprises".

2. "YueShangTong" APP - a platform for financing and loans

In order to provide greater financial support and ensure service provision, control the COVID-19 infection more efficiently and promote stable development of the Guangdong economy, the Guangdong province promulgated the Opinions about Strengthening Financial Service Support for SMEs and Coronavirus Aid for Promoting Stable Economic Development, which can be summarized as "3 reduction, 3 waivers and 1 easement". Enterprises may click "Financing and Loans" on the first page of the "YueShangTong" APP or select "Small/Micro Enterprise, and Individual Industrial/Commercial Household" - Application for Financing and Loans to browse financing and loan products or even submit applications. Enterprises may also apply for coronavirus aid loan online at the touch of one key.

資料整理：香港中華廠商聯合會商會事務部
備註：本文稿內容以中文版為準
Collation: CMA Association Affairs Department
Remarks: The Chinese version of this article shall prevail



香港中華廠商聯合會

The Chinese Manufacturers' Association of Hong Kong



廠商會率先推出電子繳費服務

• 隨心 • 隨意 • 隨地 • 隨時 •

查詢熱線：2851 1555

搜羅物資 聯繫捐助

香港中華基督教青年會與工商企業同心抗疫

Collects charity goods for needy

Chinese YMCA of Hong Kong joins hands with the business sector to combat Coronavirus



企業義工身體力行上門派送搓手液和抗疫資訊單張予獨居長者。Corporate volunteers visited elderly households to offer them hand sanitizers and anti-epidemic leaflets.

疫情當前，市民四出搶購防疫物資及日用品，可是，行動不便的長者、收入僅夠糊口的基層劊房戶、身體殘障的人士，卻未必有能力參與其中。香港中華基督教青年會利用自身網絡，一方面進行採購，另一方面聯繫商界企業捐助，為弱勢送上物資，齊心抗疫。

企業義工身體力行參與

本會的 Y-Care 企業伙伴成員於疫情期間不遺餘力，不但捐出珍貴物資，更派出企業義工關心弱勢。復康人士的自理能力較低，口罩對他們而言實為保護自己的重要防線；而行動不便或居於鄉郊的獨居或雙老長者，根本難以外出輪候或搶購物資，而面對是次突襲的疫症，令家家戶戶開支大增。

有見及此，本會 Y-Care 企業合作伙伴茲曼尼 GIORMANI，預備了 2,000 個口罩捐給本會復康單位，提升舍友的防疫能力；恆華（香港）裝飾工程有限公司，則捐出搓手液及口罩兼派企業義工，親手將物資上門派送予長者，

表達關愛。除此以外，恒生銀行除向基層派發消毒火酒及漂白水，更送上米、麵、即沖飲品等食材，亦派出義工透過電話問候，讓社會弱勢體現人間溫暖。

疫情下的支援

無論在疫症肆虐期間或在疫情過後，社會上都有很多弱勢人士需要有能之士協助。本會的慈善平台「愛·實現」基金，將邀請工商企業攜手為有需要人士實現生活上的願望，例如協助失業青年提升競爭力、讓因疫情久困在家的基層長者享受營養餐宴、讓病童或孤兒獲探望兼欣賞魔術氣球表演，以及為長者達成與昔日球星同場踢波的夢想。幫助弱勢人士抗疫，協助他們在疫情下重新振作，都需要企業大力支持及捐助。如果企業想支持基層弱勢，歡迎致電 2783 3370，或瀏覽 www.ymca.org.hk/Anti-epidemicInformation。



除防疫用品，有企業捐贈乾糧及日用品給基層家庭。
In addition to epidemic prevention supplies, enterprises also donated grocery and daily necessities to grassroots families.

In the face of coronavirus, people stock up on face masks, toilet paper rolls and all kinds of daily necessities; however, elders with limited mobility, people with physical disabilities and local grassroots families are either too weak or poor to queue overnight. Chinese YMCA of Hong Kong has been sourcing these goods through our channels while approaching the business sector to get sponsorships to lend a helping hand to those who are truly in need.

Corporate Volunteers Join the Force

Our Y-Care CSR partners spared no effort during this challenging period, they not only donating daily necessities and preventive goods but also sending corporate volunteers to reach out to the disadvantaged. People with rehabilitation needs have low self-care ability, and face masks are an important protective item for them. Likewise, seniors with limited mobility or those who live in a remote area are unable or simply cannot afford to buy these items, the outbreak of coronavirus has greatly increased household expenditure.

To assist the poor, our Y-Care CSR Scheme partner, Giormani previously donated 2,000 masks to our rehabilitation service unit, while Heng Wah (Hong Kong) Decoration Company Limited also deployed its corporate volunteers to visit elderly households, offering them hand sanitizers and masks in the face of the city-wide shortage. Besides, Hang Seng Bank not only distributed disinfectant and bleach to the grassroots but also delivered rice, noodles, instant beverages and daily items to the underprivileged. Their volunteers sent greetings to the vulnerable group via phone to show them love and care.

Support over coronavirus crisis

Whether during or after the coronavirus crisis, vulnerable and disadvantaged groups always need assistance. Chinese YMCA of Hong Kong's "Realise Love, Realise Dreams" Foundation has been working with the business sector to realise the dreams of the poor and the vulnerable. Our upcoming events include assisting unemployed youth to enhance their competitiveness; offering nutritious meals for elderly and magic balloon show to the sick children, as well as allowing senior football lovers to play a friendly game with the football star.

Helping the poor and the vulnerable to combat the coronavirus, assisting them to regain their vitality during this difficult period requires the support and donation of enterprises. If your company is interested to offer assistance to the disadvantaged group in the society, please call 2783 3370, or visit www.ymca.org.hk/Anti-epidemicInformation.



「愛·實現」基金將與本會社企 YM Balloon 合作，聯同企業義工一同製作的造型氣球，為病童或孤兒在疫情後加油打氣。(資料圖片)

The "Realise Love, Realise Dreams" Foundation will cooperate with YM Balloon, our social enterprise, to cheer up sick children or orphans with balloon art after the outbreak of coronavirus.



當市面上一罩難求，有企業送出口罩予本會復康單位的舍友。

When face masks have become one of the most sought-after items in the world, our Y-Care CSR partner offered free masks to the member of our rehabilitation unit.

新會員介紹 Introduction of New Members



華能鑫業裝飾有限公司
Huaneng Xinye Decoration Company Limited

代表：陳俊賢先生 (總經理)
產品：傢俬及裝修工程
Representative: Mr Chan Chun Yin
(General Manager)
Product: Renovation



綠巢環保科技香港有限公司
Greenest Environmental Technologies Hong Kong Co., Limited

代表：陳俊賢先生 (董事總經理)
產品：環保建築牆板、防火門
Representative: Mr Chan Chun Yin
(General Manager)
Product: Environmental protection wall panel & fire-proof door



鴻創科技 (香港) 有限公司
SuiRich Flex Limited

代表：袁錫鴻先生 (創始人兼總經理)
產品：柔軟及透明 LED 顯示屏
Representative: Mr Yuen Sik Hung
(Founder & MD)
Product: LED bendable/ transparent modules



華諾通訊 (香港) 有限公司
Wah Lok Communication (Hong Kong) Company Limited

代表：陳俊賢先生 (總經理)
產品：雲端伺服器及智能產品
Representative: Mr Chan Chun Yin
(General Manager)
Product: Cloud server & smart electronics



樂生命健康科技有限公司
Newnova Health Technology Company Limited

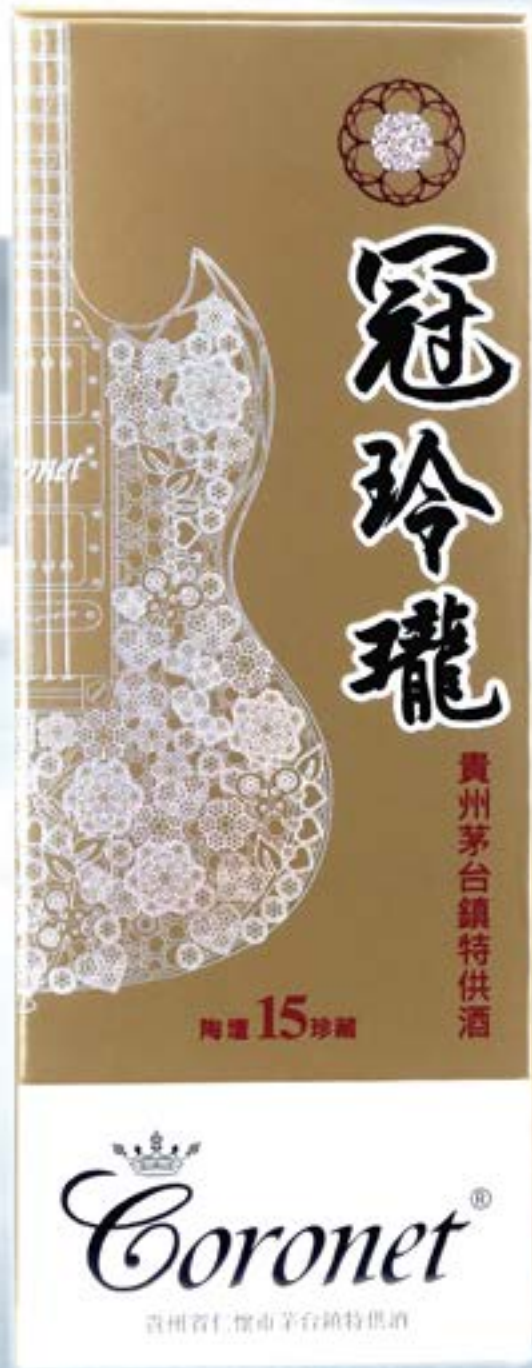
代表：盧靈蘭女士 (行政總裁)
產品：樂生命靈芝王生命液
Representative: Mdm Lo Ling Lan (CEO)
Product: Newnova life cure



Coronet®

冠玲瓏

陶壇十五年珍藏



存醞成味，久蓄氣芳

酒質明亮晶透，柔附舌尖，齒頰留香。
酒體豐滿醇厚，回味悠長，對酒當歌，人生幾何！

冠玲瓏 - 擁有十項建力士世界紀錄，香港品牌發展局認證名牌

零售價：\$1,388 CMA會員價：\$888

訂購熱線：2334 2299

Whatsapp訂購：6843 7627 或 掃描：



AARON SHUM
JEWELRY

<https://www.aaronshum.com/>

廠商會會員尊享優惠 CMA Members' offers



一豚豬手專門店

凡購買滿 \$100

全單可獲 9折優惠

查詢及聯絡：
一豚食品有限公司
電話：23633887
電郵：info@ipork.com.hk

*此優惠不適用於豬手禮卷及其他禮卷



ESPRIT

到銅鑼灣崇光百貨九樓ESPRIT床品專櫃，購物滿港幣1000元，可以獲贈**ESPRIT素色珊瑚絨枕頭毯**乙件。

查詢熱線：2942 4913 (Henry Cheung)

公司	其他尊享優惠
了實有限公司	購買「本木序」天然個人護理用品 可享有網上商店及門市 9 折優惠
大有倉集團有限公司	預繳租用 3 至 5 個月，可享 9 折優惠 預繳租用 6 至 12 個月，可享 8 折優惠
中之(香港)貿易有限公司	精選健康食品折扣優惠
中國本草世界茶葉(香港)有限公司	各式精選產品折扣優惠
中華航空	機票全年及不定期折扣優惠； 多樣化產品如機票加酒店等優惠； 專設服務熱線 (852) 2843 9230，專線購票即享折扣
元氣站保健會及港恩中醫診所	購物及診症優惠
元細胞遊戲有限公司	單頁式網頁製作 (HK\$200 現金優惠)
日本命力	於日本命力旗艦店購物可享 9 折優惠；即場營養師體檢 及諮詢服務 (價值 \$1,000)
加拿大妙睡寧(香港)有限公司	精選產品折扣優惠
永發蔘茸海味行	優惠 1) 安妮佛跳牆 ~ HK\$715/4 人份 (原價 HK\$1100) 優惠 2) 安妮嫩湯 ~ 海底椰雪梨蜜棗燉豬展湯 HK\$41.8/1 包 (原價 HK\$55)
老鳳祥珠寶(香港)有限公司	購買正價鑲嵌產品可享 78 折優惠、黃金產品半價手工費
自由製作	1. \$2500 (原價 \$3400) 專業企業形象攝錄服務，拍攝訪問短片， 向外界展示公司形象特徵 2. \$1400 (原價 \$1600) 專業企業形象攝影服務，拍攝公司管理層 團隊照，員工團隊照、營運狀況、服務情況、工作表現等，向外 界展示公司形象特徵。
杏美行	購買【特健樂】、【金悅堂】、【Life Enhance】品牌任何產品， 享有 85 折優惠
位元堂	9 折中成藥購物優惠 (指定推廣產品除外)
周大福珠寶金行有限公司	1. 凡購買足金類產品，手工設計費可享 8 折 2. 凡購買足金類產品，即可以「換購價」選購指定首飾乙件
尚和堂	以 8 折享用指定中醫治療
東億生物有限公司	會員凡於 www.bodysos.com 或透過電話購買東億生物 有限公司正價產品可享有 88 折優惠
金至尊珠寶(香港)有限公司	優惠一) 購買正價珠寶鑲飾，可享 88 折優惠 優惠二) 購買足金飾品，可享手工費 5 折優惠
長榮航空	以廠商會「企業會員」優惠價購買機票及 享受不定期折扣優惠； 長榮航空訂位部企業會員專線：28109251- 接通後按 6 字
冠玲瓏	出示會員證可享額外 95 折購物優惠
冠華食品菓子廠有限公司	正價貨品 88 折 (減價貨品除外)
恆香老餅家有限公司	全店正價貨品 9 折優惠
恒昌隆燕窩參茸行有限公司	「恒昌隆燕窩蟲草養陰膏」優惠價 \$398 (原價 \$498)，強肺抗 疫之選，香港製造。
美味棧國際有限公司	惠顧全線產品可享有 95 折優惠； 購物折實價滿 \$1000 或以上，可享免費送貨服務 (離島地區另議)
香港加德士	限定優惠一：8 張 HK\$30 汽油優惠券 (總值 HK\$240) 優惠二：憑能源咭加油專享特惠折扣優惠

公司	其他尊享優惠
香港美利酒店	廠商會會員尊享香港美利酒店住宿優惠，Superior 客房每房每 晚由港幣 \$2,000 起
香港華美粵海酒店	訂房、用餐及足底按摩優惠
香港電訊	廠商會會員現凡申請或續約商業寬頻或電話線服務， 即可享 24 個月免費「家居辦公」方案及香港電訊雲端 備份服務。
浚達國際市務有限公司	於 Smartech 陳列室購買任何產品可享有 7 折優惠
軒日珠寶有限公司	所有玉石產品 9 折優惠
健康之路有限公司 (嗎哪有機站)	以 95 折惠顧全線產品
健絡理療	廠商會會員尊享中醫診症及推拿理療 85 折優惠
常康健工房有限公司	各式精選健康產品折扣優惠
得利龍百貨有限公司	凡於「得利龍」專櫃及專門店惠顧正價貨品可享 9 折， 特價貨品可享額外 95 折
蛋撻王	購買酥皮或牛油皮蛋撻，即享買 5 送 1 優惠。
雅芳婷有限公司	購買任何貨品可獲 9 折優惠 (指定貨品除外)
雅蘭集團有限公司	正價貨品 95 折優惠
裕華國產百貨有限公司	正價貨品 9 折
零食物語	購物滿 HK\$150(折實計) 可享 9 折優惠
僑豐行有限公司	在橫丁門市購物，正價貨可享有 9 折優惠， 特價貨可享 95 折優惠。
嘉頓有限公司	以特惠價購買嘉頓有限公司產品，請按入以下連結 索取訂購表格： http://www.cma.org.hk/uploads/ckfinder/files/Garden.xlsx
銀龍飲食集團	購買 \$1,000-「銀龍禮券」，即可額外免費獲贈 \$100- 銀龍禮券。(每張面值 \$50.00)
鈞耀有限公司	以優惠價購買濕紙巾產品
德記五金發展有限公司	全店正價貨品 8 折優惠
毅創來集團有限公司	MEC YS 系列附帶 USB 充電插拖板 9 折優惠
髮再生	優惠 1) 免費頭皮詳細健康檢測，納米能量健髮護理及 智能微頻頭療護理一次 優惠 2) 髮再生中藥洗髮露 / 藥液 (7 折) 優惠 3) 髮再生護髮及健髮療程 (8 折)
澳栢國際有限公司	各式精選打印機耗材產品折扣優惠
懋康企業有限公司	凡購買酒品每款 12 支或以上，可享有 8 折優惠。
聯財有限公司	購買任何正價產品，即可獲 9 折優惠。詳細產品資料及 售價可在網店 www.shopablehealth.com 查看
韓讚	優惠 1) 堂食惠顧午市套餐可享 9 折優惠 優惠 2) 堂食惠顧午餐牌可享 8 折優惠
麗豐國際(香港)保健品有限公司	正價貨品 65 折優惠
eCup HK Limited	經 eCup 預購飲品手機 App 訂購任何飲品及食品， 即可享有 9 折優惠
MENCE	面部療程及身體療程七折優惠
OTO Bodycare (H.K.) Limited	於 OTO 專門店購買定價貨品，即可享 95 折優惠
The White Room	優惠 1) 1 至 2 日滑雪課程即可專享 9 折優惠 優惠 2) 3 日以上雪課程即可專享 85 折優惠

尚有更多其他優惠請參閱本會網站 For more offer details, please visit CMA website : www.cma.org.hk/tc/menu/60

企業金融

— CORPORATE FINANCE —

交，誠以立信
通，歷久致遠